

Emily Elisabeth Keough

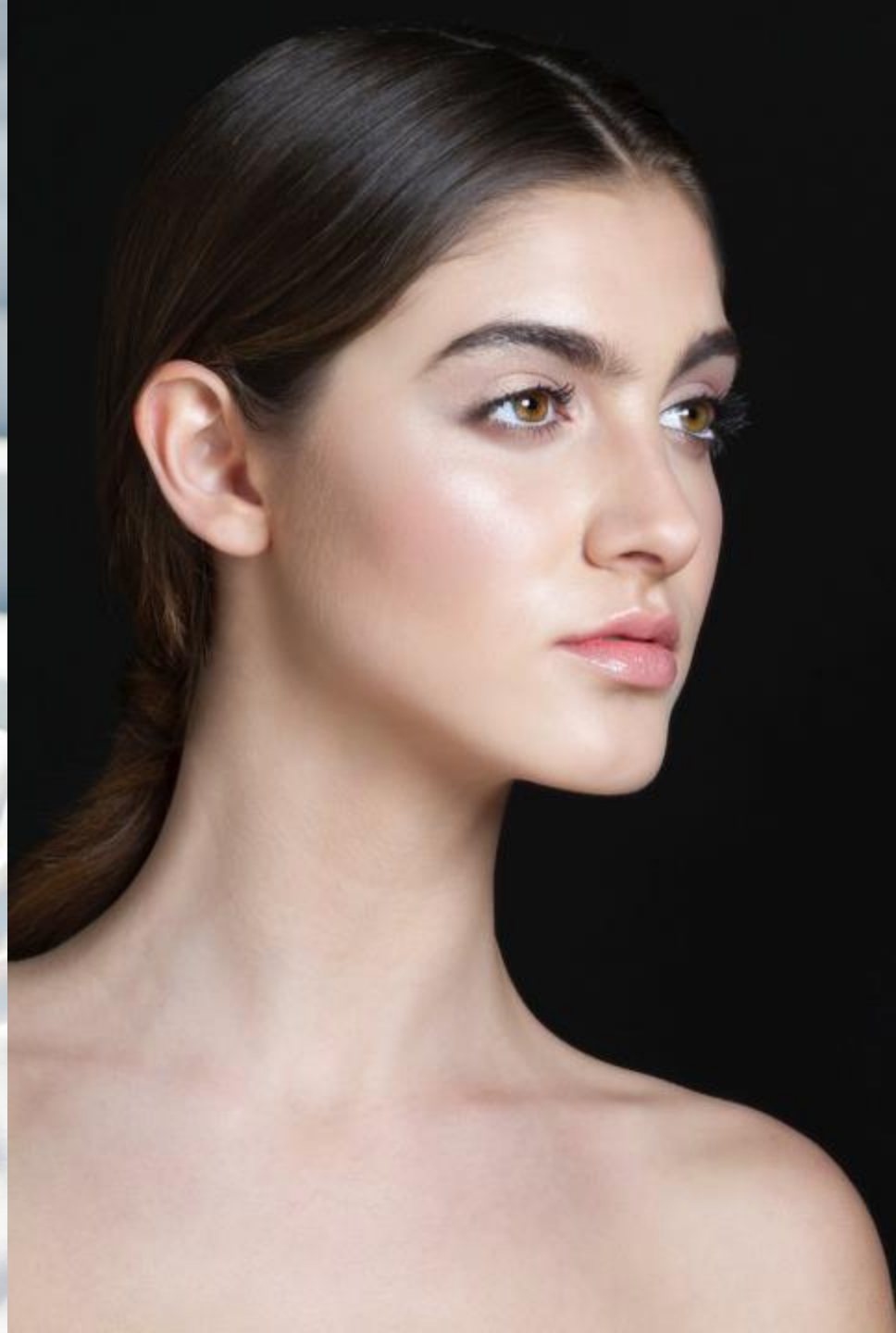
Makeup Artist

Book One

> Beauty























Book Two

> Celebrity



Book Three

> Editorial

auxiliary

m a g a z i n e



nothing
without **music**

iamx

audrey kitching / porcelain
darkspectre / night circus
firestarter / punk never dies

douglas mccarthy / nitzer ebb
mindless self indulgence / jimmy urine
nina de lianin / in strict confidence





THIS PAGE
Dress by Cesar Arellanes paired with earrings by
Melody Ehsani and veil by Karen Longdon.
OPPOSITE PAGE
Harness by Regal Rose and vintage dress, from
Fashion Library paired with necklace by Versace for
H&M, earrings by Melody Ehsani, and rings by Alex
& Andrey, Karen London, and AxxApple.

april/may 2013 AUXILIARY

BLUSH

FIT PUBLICATION

SUMMER 2015

LA
VIE
BOHÉMIÉ



SHORTS Reis
HAT House of Lafayette
SHIRT 2nd Day
NECKLACE Topshop
FANNY PACK Erin Dana

escape.

Photography by Collins Nai

On the cover:
SWIMSUIT Reis
HAT House of Lafayette
SUNGLASSES Nasty Gal
NECKLACE Vintage

MODELED BY Lena Greer
STYLED BY Roberto Johnson and Chrissy Riley
MAKEUP BY Emily Keough
HAIR BY Kristina Cappuccitti
NAILS BY Katie Farroll
PHOTO ASSISTANT Ruby Fret

DRESS Reis
HAT House of Lafayette



DRESS Reis
HAT House of Lafayette



DRESS BIYA for Johnny Was
SHOES Reis
BAG R Dalamal
BODY CHAIN Seasonal Whispers

blush MAGAZINE

FIT STUDENT PUBLICATION

WINTER 2014

*All About
Girl Power*

REBOOT YOUR
BEAUTY BAG

*Dressing
The First Lady*

The
Celebration
Issue



ATMOSPHERICHAZE

IMAGERY COLLINS NAI WARDROBE OLIVIA GONZALEZ

MAKE-UP EMILY KEOUGH MODEL LAUREN BUDZICHOWSKI



DRESS: DIRTY MONROE



COAT: EXPRESS
DRESS: DIRTY MONROE
STOCKS: H&M



mint exclusive

SOCIAL MEDIA MAVEN

AUDREY KITCHING



PHOTOGRAPH - STEPHEN WILSON
MAKEUP ARTIST - EMILY KEOUGH
HAIR STYLIST - KIM GARDINO
WARDROBE STYLIST - ERICA RUSSELL



Book Four

> New York Fashion Week





Book Five

> Men's Grooming



Book Six

> Film



Short Film | "Visiting Hours" (2011) | Directed by Max Tromba



Book Seven

> Facecharts

* Mediums used: makeup and paper

SEPHORA HALLOWEEN

MONSTER BRIDE



SEPHORA HALLOWEEN

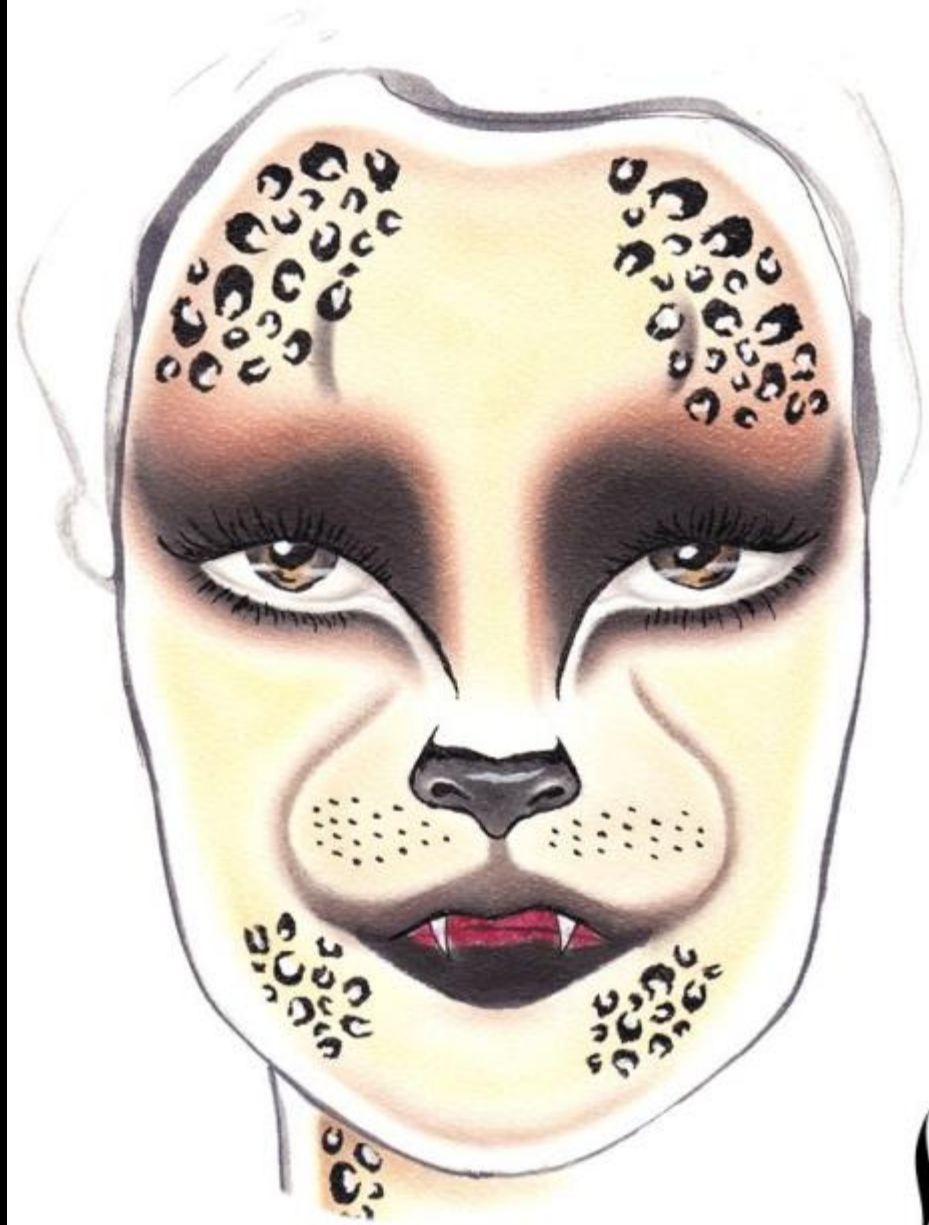
DAY OF THE DEAD



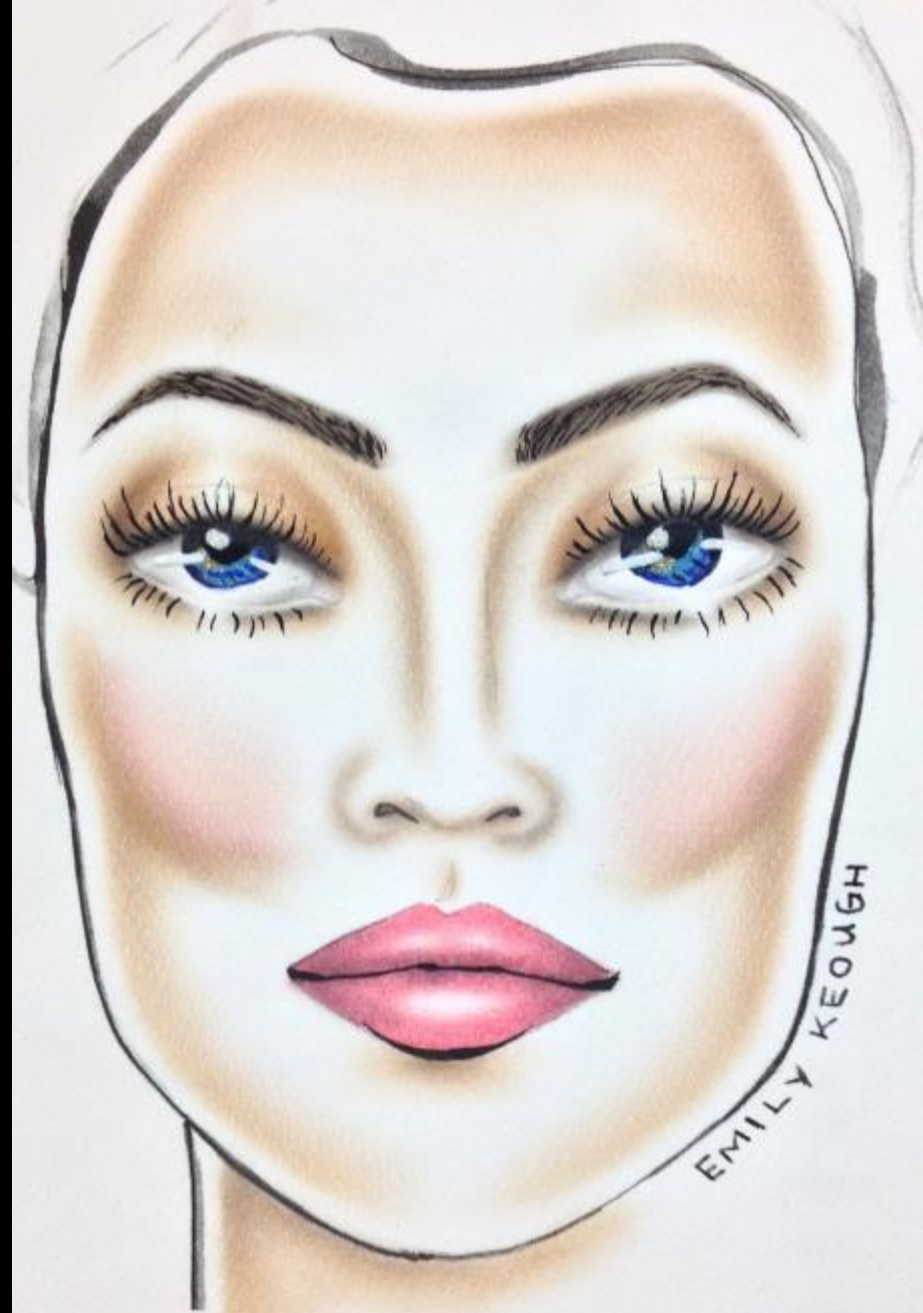
SEPHORA HALLOWEEN
FLAPPER



SEPHORA HALLOWEEN
WILDCAT











Biography

Emily grew up in rural western Massachusetts with a passion for fine arts. Through her background in painting, drawing and photography, she discovered the art of makeup.

Emily is a makeup artist with over seven years of industry experience ranging from editorial, celebrity, events, bridal, New York Fashion Week, and education. Her work has been featured in numerous international publications including *Nylon*, *Mint*, and *Auxiliary* in addition to The Art of Male Makeup educational book. She currently resides in New York City and works as a Senior Artist for a major cosmetic retailer.



Training:

- Bachelor of Science Degree | Cosmetic & Fragrance Marketing
Fashion Institute of Technology, New York, NY.
- Certificate of Study | Illamasqua School of Makeup Art
London, UK.

Credits

FASHION

C. Keller
Rev Now
Jenni Kane
Kal Reiman
Michelle Kim
Sergio Davila
Dennis Basso
Gregory Parkinson
Yellow Fever Collective

PRINT

W27
Mint
Blush
Nylon
Auxiliary
R. Legacy
Contributor

PUBLISHED

The Art of Male Makeup, David Horne

FILM

Law & Order: SVU (2013)
"Ryan Gosling" (2012) Late Cambrian music
video
"Visiting Hours" (2011) directed by Max Tromba

WEB

Promgirl.com
Sephora.com
YouTube.com x Brand Assembly