

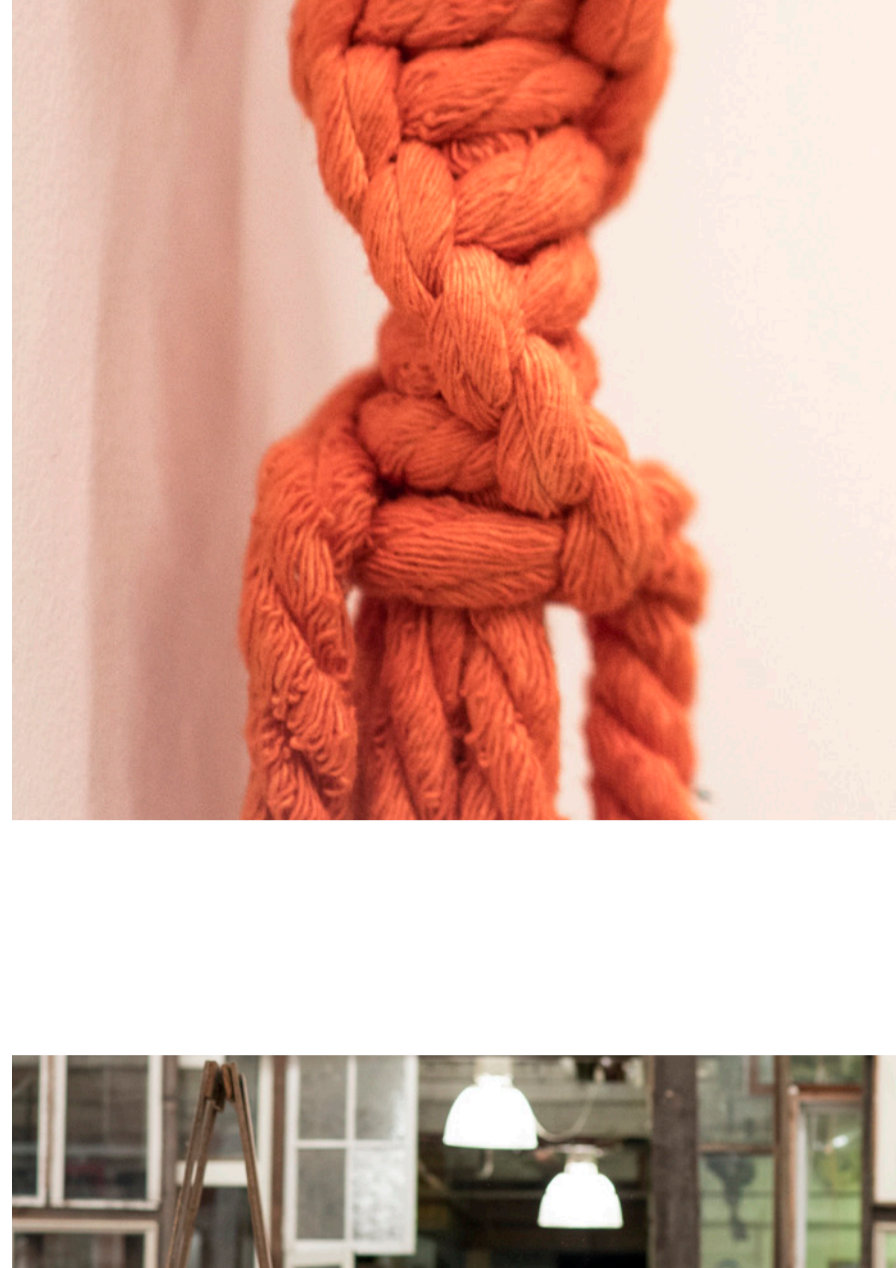


Melissa Carey



artist. teacher. crafter. adventurer.

Melissa is an artist of all sorts, who loves to create provocative installations and teaches craft workshops to inspire and bring out hidden creativity.



Who

Melissa Carey is an established Contemporary Artist in Sydney, Australia. She has a Visual Art degree, along with many years experience. Melissa continues to be inspired everyday by the beauty of life, and uses a wide variety of different mediums, ranging from drawing, photography, printmaking, to sculpture, painting and installation art. She runs craft workshops and also contributes public artwork within the community through festivals, art exhibitions, collaborations and commissions.

Some highlights of Melissa's art career are: creating hand-dyed macramé installations for Seafolly at 5 stores across Australia; creating a 9 metre woven glowing tunnel installation at the Beams Festival; completing a 2.5 metre Treble Clef Sculpture Commission for the Blues N' Roots Festival by Sunset Events; Group Exhibition' Material Pleasure' at Heathcote Gallery; participating in several Sculpture Park Exhibitions with the City of Bayswater, Perth; and collaborating Fire Sculptures for Qfest Fire Festival, Cue, Australia.

Melissa regularly volunteers within the community, and a recent highlight was working in the art room at Princess Margaret Children's Hospital at the "Club ADO" – a facility within the hospital for adolescence patients to relax, explore, learn new skills and have fun. Melissa is passionate about the environment, recycling, healthy eating, taking reflective moments, smiles, watching the waves, philosophy, documentaries, giggles, wandering through forests, and passing on skills through her Craft Workshops.

She grew up in the neighbourhoods of Perth, Australia. She is an adventurer, travelling wherever the wind blows, and has lived abroad in London and Holland, and now resides in Sydney, Australia.



Melissa has an art studio at **The Space Sydney** - a hub of artists, designers and makers, all under one warehouse roof and is located in Alexandria, Sydney. Melissa completes large installations in her studio and private commissions. She also runs craft workshops in the studio, with beautiful natural light during the day, and a warm fire by night. She has a passion for sharing her knowledge for the arts, and for giving people a unique glimpse into the world of an artist.

Where

– The Space Sydney
282 Wyndham St Alexandria, NSW

Commissions

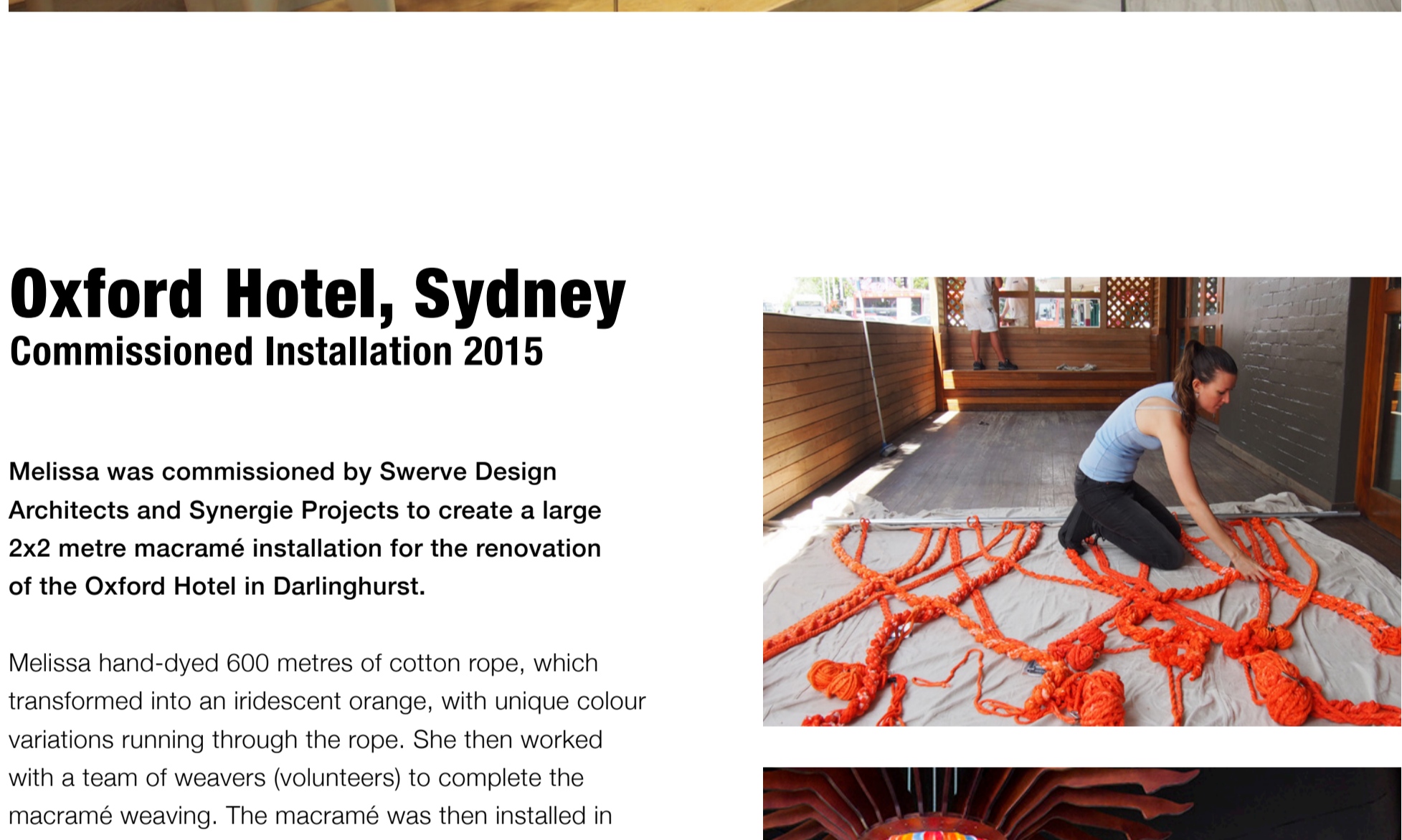
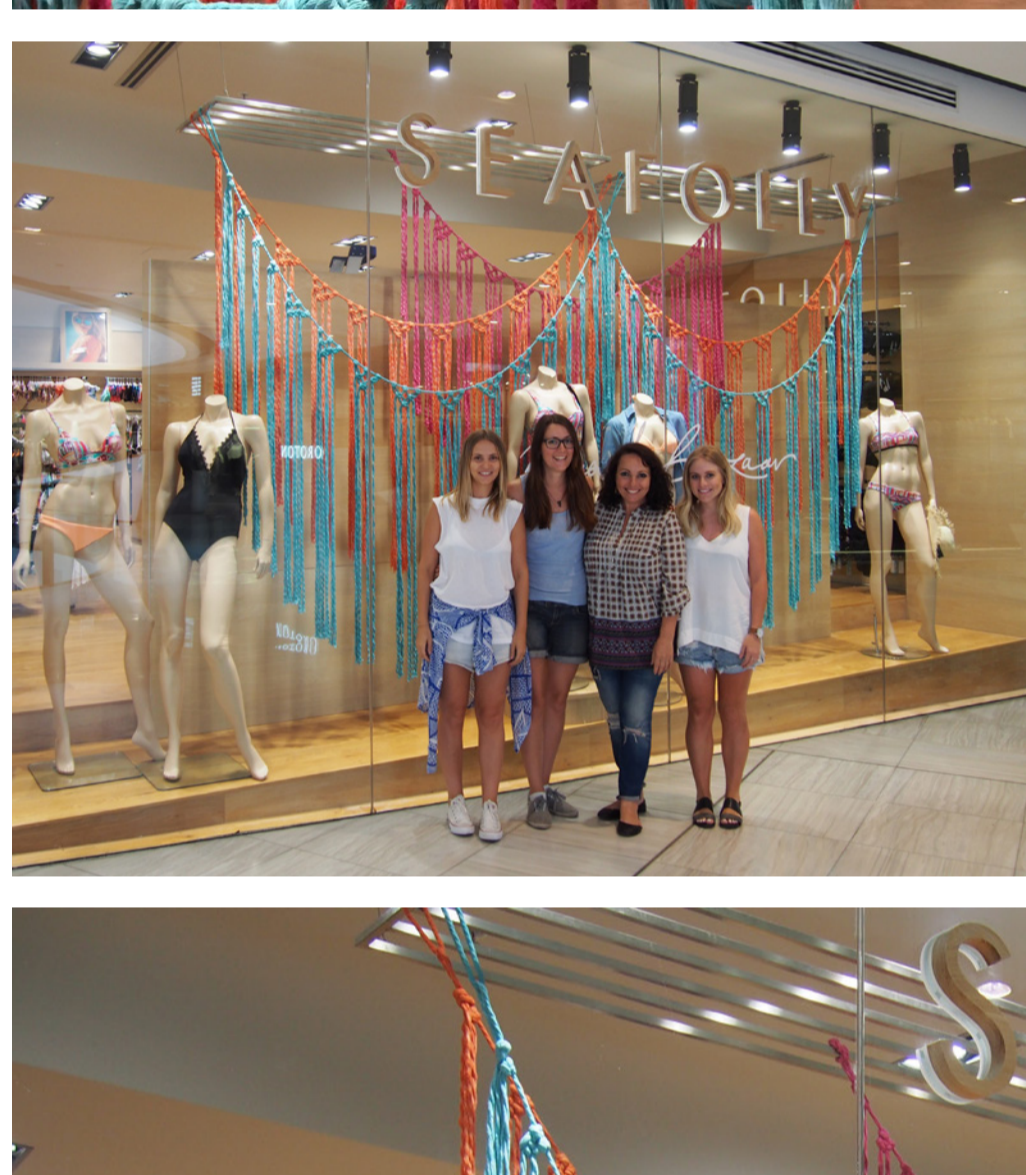


Seafolly, Sydney ~Commissioned Installation 2016



Melissa recently completed an art installation for Seafolly Australia - a high end swimwear brand. The installations were featured in their top 5 stores around Australia. The installation is made from 7,000 metres of hand-dyed cotton rope and woven with macramé. The installation will be on display during Feb/March 2016 in the following locations:

NSW Westfield Bondi Junction & Westfield Miranda
QLD Pacific Fair Gold Coast & Westfield Carindale
WA Claremont Quarter



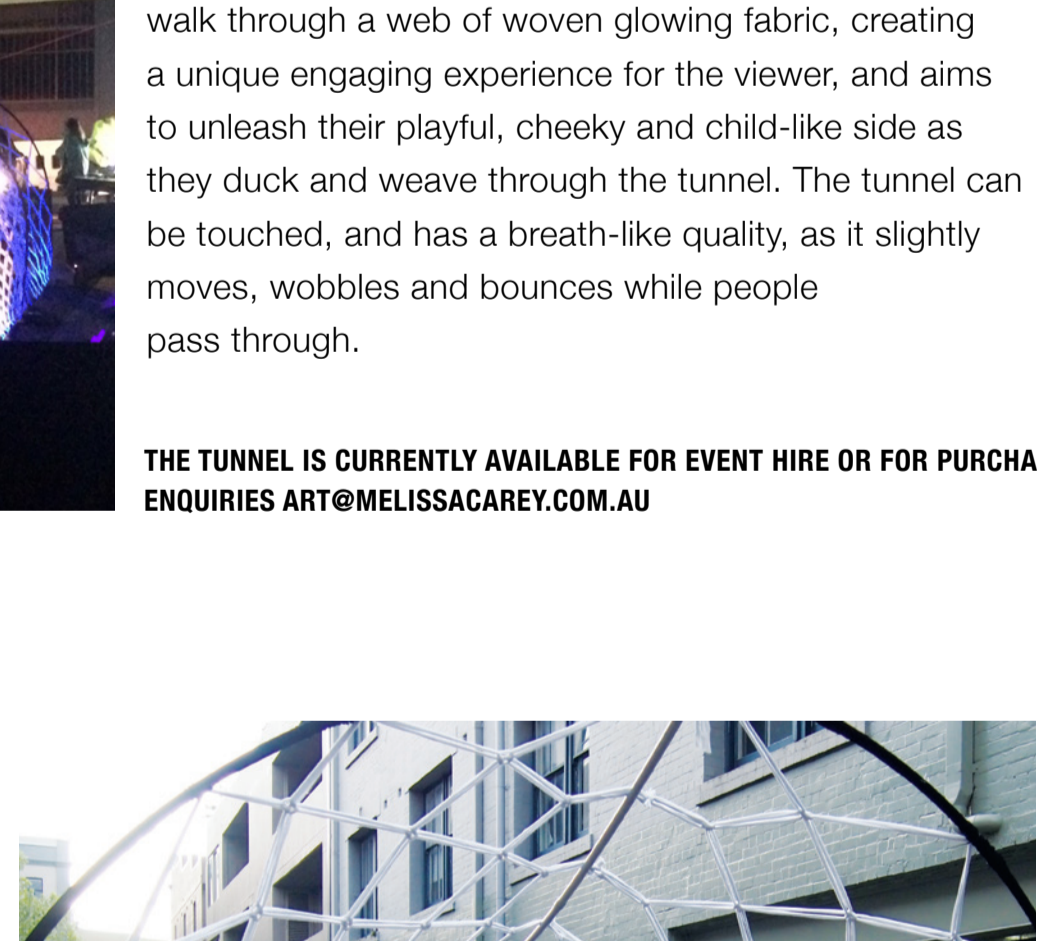
Oxford Hotel, Sydney Commissioned Installation 2015

Melissa was commissioned by Swerve Design Architects and Synergie Projects to create a large 2x2 metre macramé installation for the renovation of the Oxford Hotel in Darlinghurst.

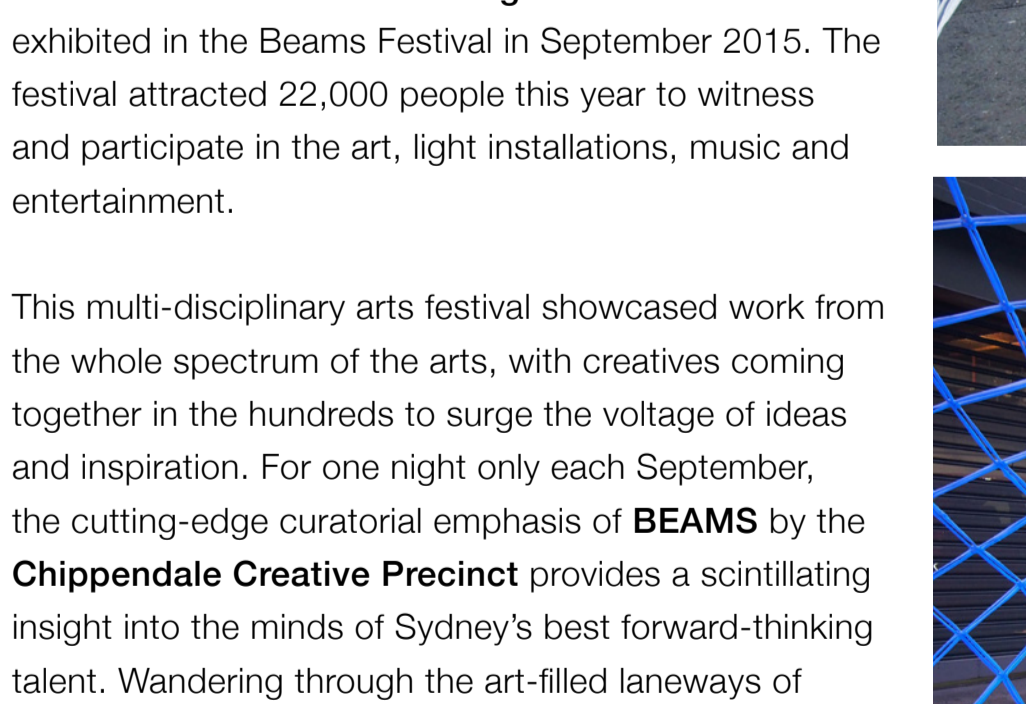
Melissa hand-dyed 600 metres of cotton rope, with unique colour variations running through the rope. She then worked with a team of weavers (volunteers) to complete the macramé weaving. The macramé was then installed in the hotel into a unique pattern and held in place. The macramé installation is a permanent feature in the newly renovated, cosmopolitan Hotel in one the most hip and buzzing areas of Sydney.



Projects



Through the Tunnel Art Installation



CONCEPT: Moments in time is to pass through a web of consciousness, to be present in all senses, to experience the moment, and unleash the curiosity within.

DESCRIPTION: The art installation is a 9 metre glowing tunnel of woven macramé fabric with projected UV Lights that glows in the night. The tunnel is designed to be sustainable and environmentally friendly through the use of recycled fabric and low powered UV Fluorescent lighting.

The tunnel is an interactive work, where people can walk through a web of woven glowing fabric, creating a unique engaging experience for the viewer, and aims to unleash their playful, cheeky and child-like side as they duck and weave through the tunnel. The tunnel can be touched, and has a breath-like quality, as it slightly moves, wobbles and bounces while people pass through.

THE TUNNEL IS CURRENTLY AVAILABLE FOR EVENT HIRE OR FOR PURCHASE. ENQUIRIES ART@MELISSACAREY.COM.AU

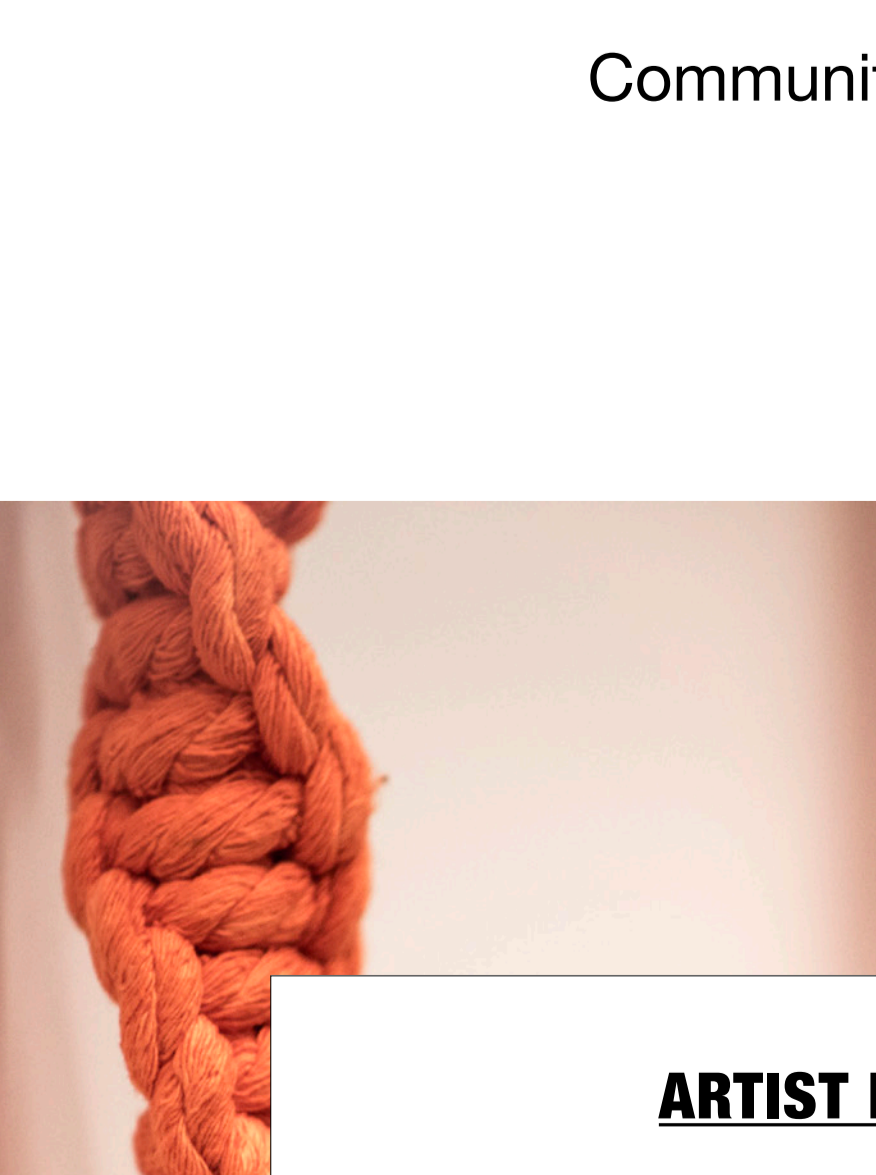
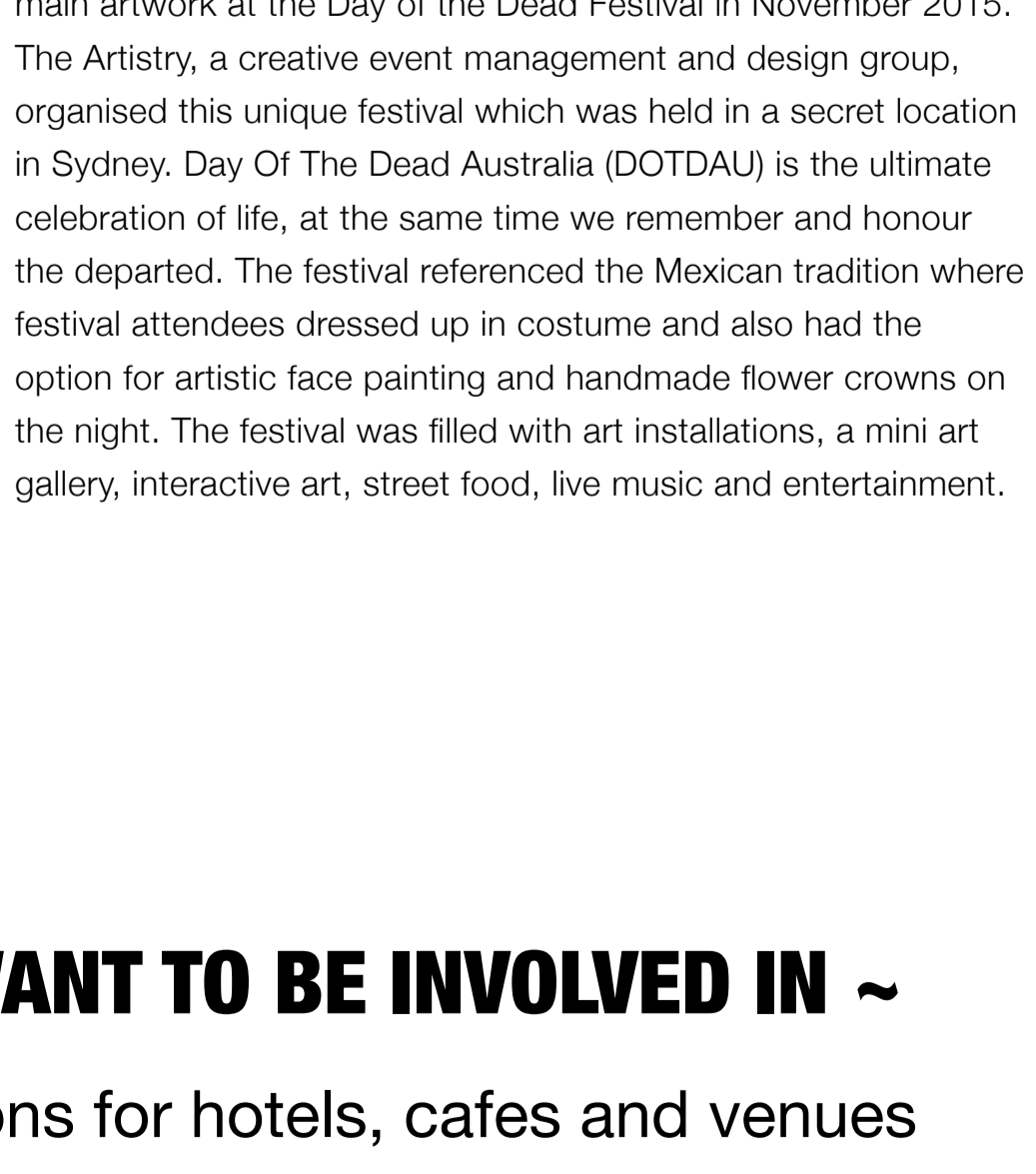
Beams Festival 2015

BEAMS is a flash in the night of colour, form, movement and sound, descending upon the streets of Chippendale to illuminate the creative talent of Sydney.

Melissa's art installation "Through the Tunnel" was exhibited in the Beams Festival in September 2015. The festival attracted 22,000 people this year to witness and participate in the art, light installations, music and entertainment.

This multi-disciplinary arts festival showcased work from the whole spectrum of the arts, with creatives coming together in the hundreds to surge the voltage of ideas and inspiration. For one night only each September, the cutting-edge curatorial emphasis of **BEAMS** by the **Chippendale Creative Precinct** provides a scintillating insight into the minds of Sydney's best forward-thinking talent. Wandering through the art-filled laneways of Chippendale, audiences experience a night of communal 'enlightenment'. Festivalers also enjoy the opportunity to directly participate through hands-on art-making, workshops and plein air performances.

www.beamsfestival.com.au



Day of the Dead Festival 2015

Melissa's art installation "Through the Tunnel" was featured as a main artwork at the Day of the Dead Festival in November 2015. The Artistry, a creative event management and design group, organised this unique festival which was held in a secret location in Sydney. Day Of The Dead Australia (DOTDAU) is the ultimate celebration of life, at the same time we remember and honour the departed. The festival referenced the Mexican tradition where festival attendees dressed up in costume and also had the option for artistic face painting and handmade flower crowns on the night. The festival was filled with art installations, a mini art gallery, interactive art, street food, live music and entertainment.

~ 2016 PROJECTS I WANT TO BE INVOLVED IN ~

Large permanent installations for hotels, cafes and venues

Large site specific installations for festivals and events

Art projects, exhibitions and festivals

Community based projects

ARTIST MELISSA CAREY

+61 405 559 254

art@melissacarey.com.au

www.melissacarey.com.au

www.facebook.com/artistmelissacarey

[instagram.com/artistmelissacarey](https://www.instagram.com/artistmelissacarey)