

JUSTIN MENENDEZ

Le Revenant

Q1 Collection

Institutional & Private Placement

ARTIST STATEMENT

THIS COLLECTION INTERROGATES THE COLLAPSE OF THE REAL IN AN AGE MEDIATED BY SCREENS.

EACH WORK BEGINS AS A PHYSICAL ACT—CUT, CARVED, AND CONSTRUCTED BY HAND. THESE GESTURES ARE DOCUMENTED, THEN SUBJECTED TO DIGITAL DECONSTRUCTION, WHERE THE IMAGE DETACHES FROM ITS ORIGIN AND PASSES THROUGH SUCCESSIVE TRANSFORMATIONS. THE PROCESS MOVES BETWEEN ANALOG AND DIGITAL CONDITIONS, DESTABILIZING THE BOUNDARY BETWEEN WHAT IS FIXED AND WHAT IS PERCEIVED.

THE FINAL ARTIFACT IS NO LONGER A REPRESENTATION, BUT A REVENANT—AN IMAGE THAT HAS BEEN TRANSFORMED AND RECONSTITUTED INTO MATERIAL FORM.

ANALOG DIGITAL SCULPTURAL

TEXTILE MONUMENTALS



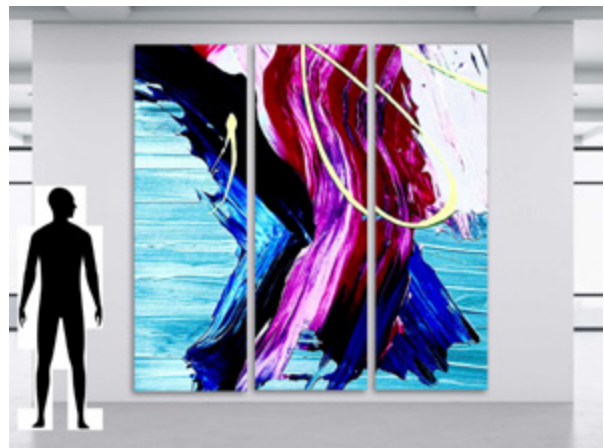
IDEOLOGICAL DIFFERENCES BETWEEN FRIENDS



SUSTENANCE



LIGHTWEIGHT



A PASSIONATE COLLISION

INDUSTRIAL MONUMENTALS



ERUDITE



ONE DAY AT A TIME



AUDREY 11



MATADORIAN VANITY

THE MONUMENTAL CYCLE

Institutional-scale propositions.

All works are unique, irreducible physical objects.
Acrylic and Archival Pigment on Aluminum, 2026

Ideological Differences Between Friends (84 x 108 in. Triptych)	\$105,000
Sustenance (84 x 108 in. Triptych)	\$105,000
Lightweight (90 x 90 in. Triptych)	\$97,000
A Passionate Collision (90 x 90 in. Triptych)	\$97,000
Erudite (70 x 50 in.)	\$73,000
One Day at a Time (50 x 70 in.)	\$73,000
Audrey 11 (70 x 50 in.)	\$73,000
Matadorian Vanity (70 x 50 in.)	\$73,000

ACQUISITION NOTE

All works listed are unique works (Edition 1/1).
Prices reflect retail / insurance value.
Buyer is responsible for shipping, handling, and applicable taxes.
High-resolution reference plates and detail shots available upon request.

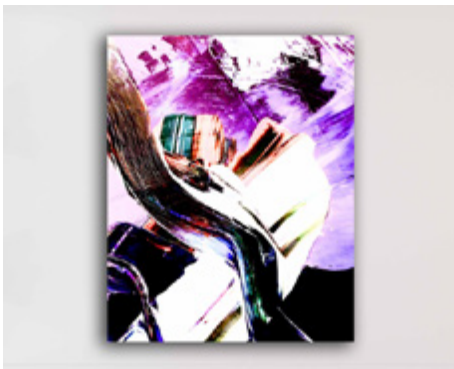
THE INDUSTRIAL INTERFACE



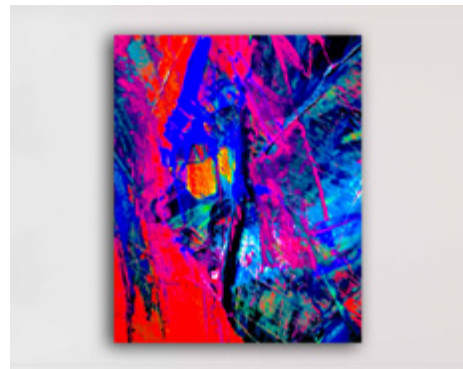
MERCURIAL NARCISSUS



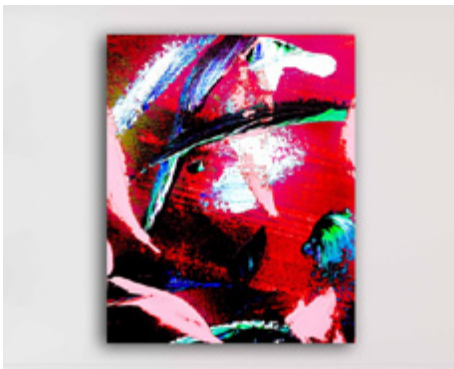
WOMAN IN AN EVENING GOWN



PRECOG



HYPERSCALING ENTROPY



BLED WHITE



VELOCITY

THE INDUSTRIAL INTERFACE

Hostile substrate interrogations.

All works are unique, irreducible physical objects.
Executed in Acrylic and Archival Pigment on Aluminum Dibond, 2026

<i>Mercurial Narcissus</i> (2026, 60 x 48 in.)	\$63,000
<i>Woman in an Evening Gown</i> (2026, 60 x 48 in.)	\$63,000
<i>Precog</i> (2026, 60 x 48 in.)	\$63,000
<i>Hyperscaling Entropy</i> (2026, 60 x 48 in.)	\$63,000
<i>Bled White</i> (2026, 60 x 48 in.)	\$63,000

ACQUISITION NOTE

All works listed are unique works (Edition 1/1).
Prices reflect retail / insurance value.
Buyer is responsible for shipping, handling, and applicable taxes.
High-resolution reference plates and detail shots available upon request.

Selected Works



HYPNOTIC, 2025



VOICES IN THE DARK, 2024



LET IT RAIN, 2025



HYPNOTICA II, 2025



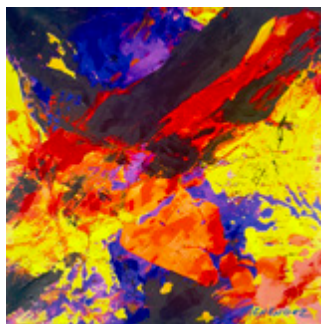
RECOVERY, 2025



SCHIZOAFFECTIVE, 2024



A GILDED AGE, 2023



UNDER THE STRATA, 2025



MASK VI, 2025

Selected Works

Foundational Interrogations of the Simulacra. 2023-2025.

All works are unique, irreducible physical objects.
Acrylic and Archival Pigment on Canvas (2023–2025).

<i>Hypnotic</i> (2025, 48 x 36 in.)	\$27,500
<i>Voices In The Dark</i> (2024, 48 x 36 in.)	\$27,000
<i>Hypnotica II</i> (2025, 24 x 30 in.)	\$15,000
<i>Schizoaffective</i> (2025, 30 x 24 in.)	\$15,000
<i>Recovery</i> (2025, 30 x 24 in.)	\$15,000
<i>Let It Rain</i> (2025, 30 x 24 in.)	\$15,000
<i>A Gilded Age</i> (2023, 30 x 24 in.)	\$15,000
<i>Under The Strata</i> (2025, 24 x 24 in.)	\$13,000

ACQUISITION NOTE

All works listed are unique works (Edition 1/1).
Prices reflect retail / insurance value.
Buyer is responsible for shipping, handling, and applicable taxes.
High-resolution reference plates and detail shots available upon request.