



BUBBLEGUM AFTER SCHOOL

Bubblegum After School is a quiet, symbolic world where characters are defined by singular emotional truths, expressed through repetition, restraint, and presence.

These worlds extend into objects across art, fashion, and collectible culture.

The works presented are conceptual explorations.

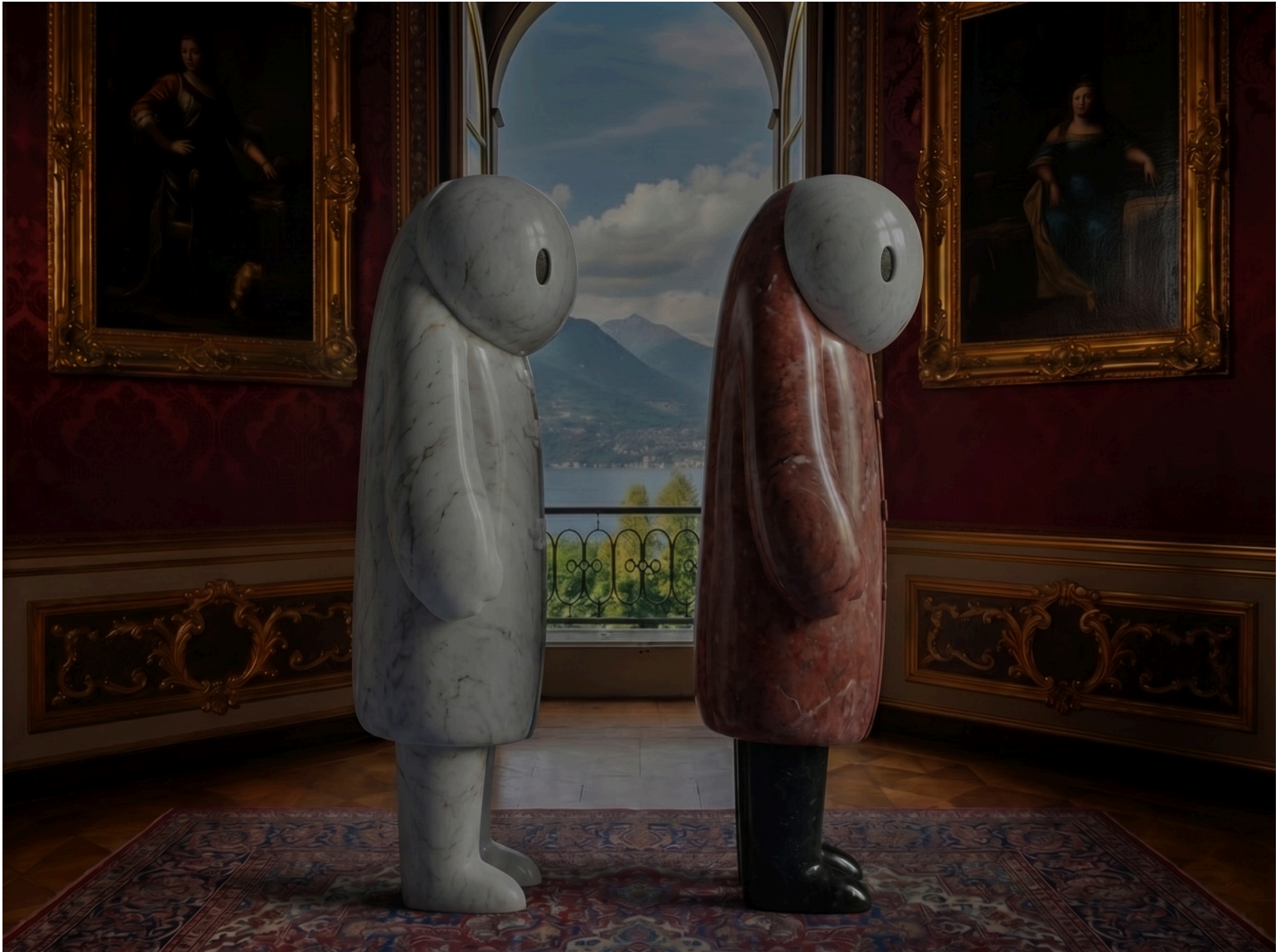
# THE NEIGHBOURS BEYOND FOREST BLEU

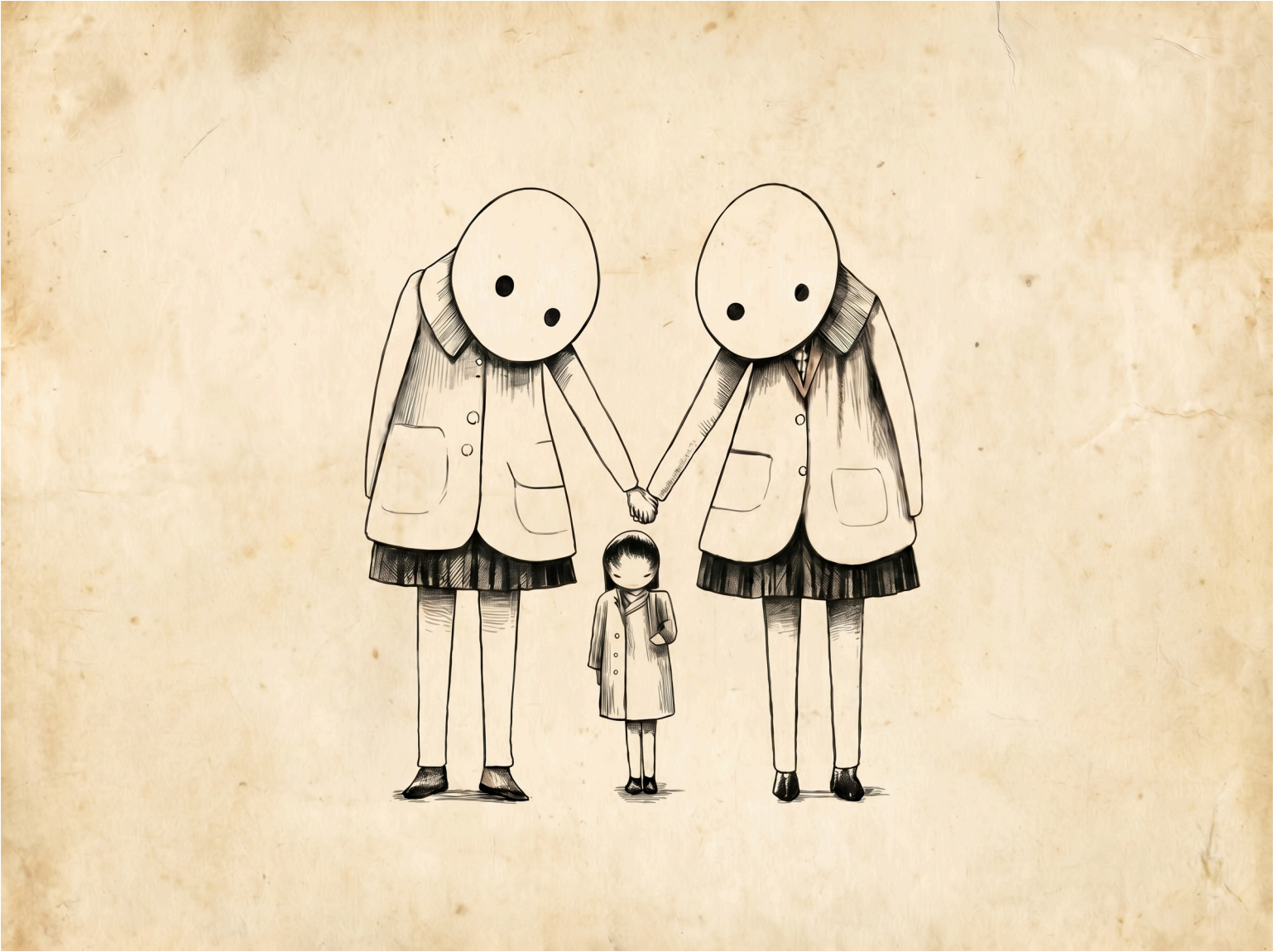
Meaning is carried through presence rather than language.

Figures are recognised through repetition, proximity, and shared stillness.





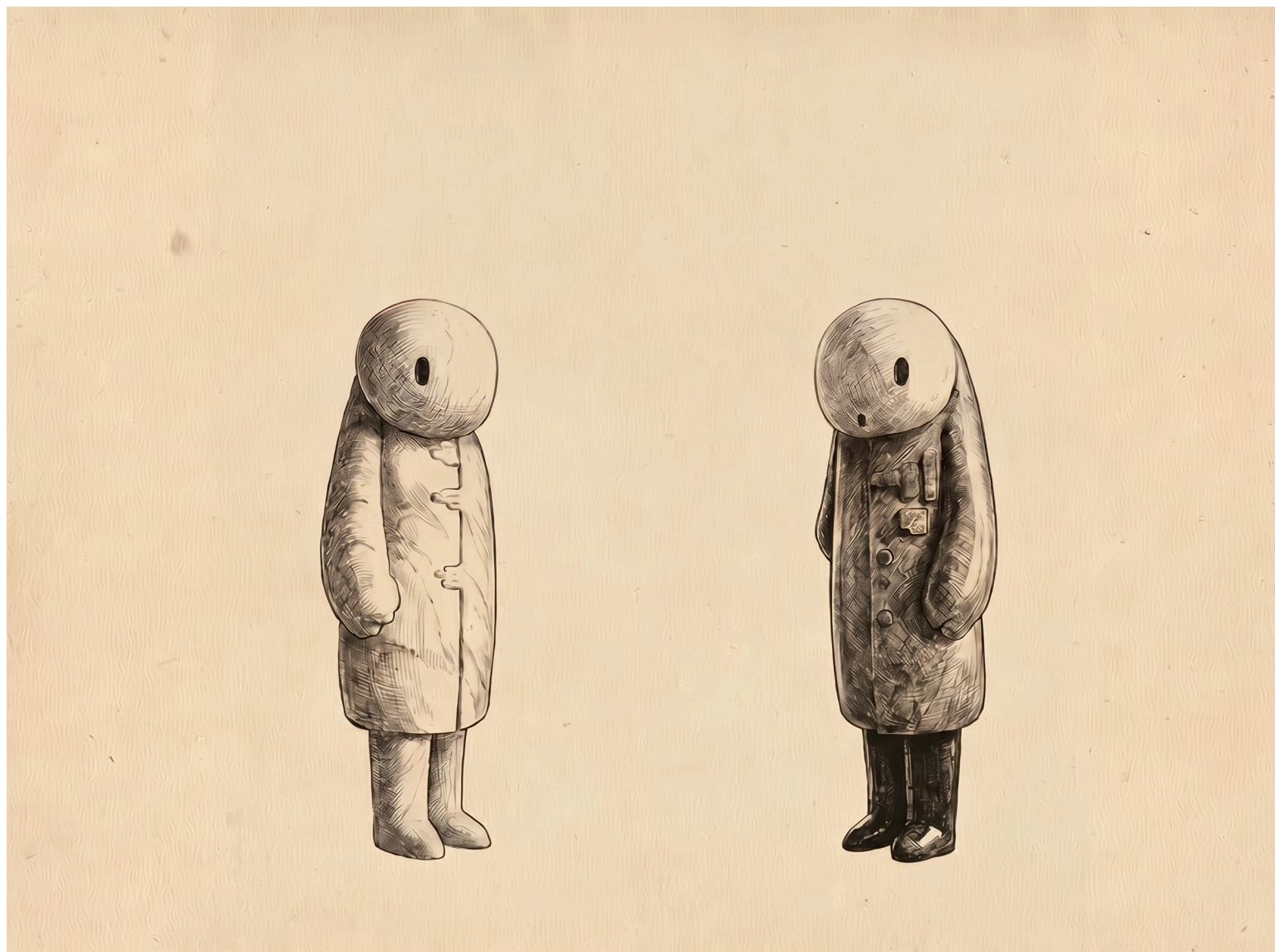




THE FAMILY  
As if remembered



THE HEART KEEPERS  
Something fragile



## THE PAIR

Presence is enough









FOREST BLEU

**IT BEGINS WITH A FEELING.**

The rest gathers around it.

Something small,  
gently kept.







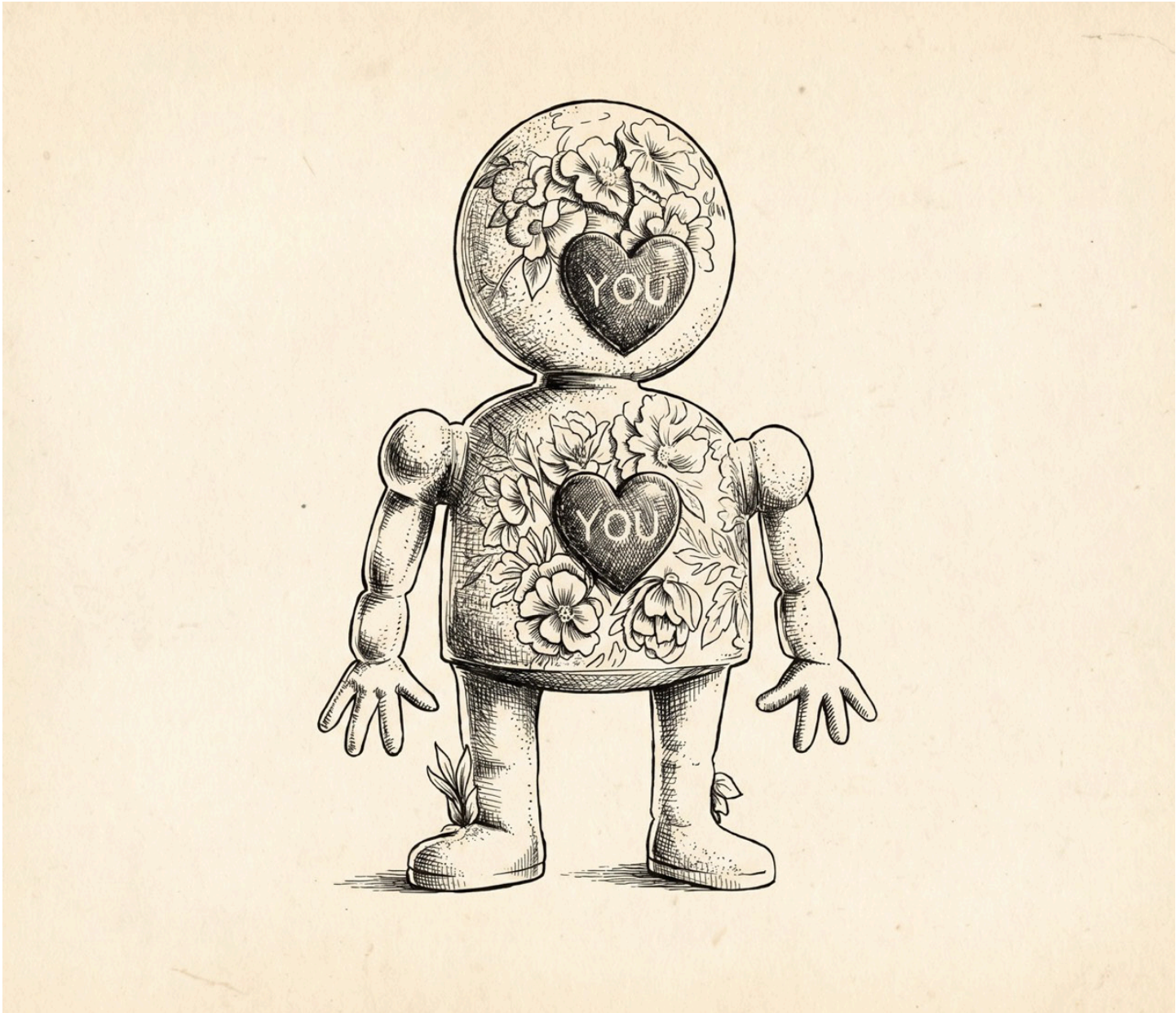
AEMILIA BLUME

A single gesture—  
an ice cream, carried with quiet precision.



A quieter affection





YOU YOU DOLL  
Blooming





A shift in form  
The same language

# THE SILENCE OF DEVOTION



## Material Language

Each material is treated not as surface, but as memory, weight, and presence.

### Bronze

The patience of time, a form that endures beyond the forest, and those who once stood within it.

### Ceramic

A vessel for a held breath, delicate at the rim, grounded at its core.

### Glass

A boundary between worlds, visible but unreachable, holding the trace of a whisper.

### Marble

The weight of a secret, pressed into stillness.

### Resin

Something lost, held in amber clarity, carrying the quiet cold of the present.

### Textile

The drape of absence, shaped by a body no longer there.

**Maria B Goretti**

Creative Direction / Spatial Systems

[studio@bubblegumafterschool.com](mailto:studio@bubblegumafterschool.com)

[www.bubblegumafterschool.com](http://www.bubblegumafterschool.com)