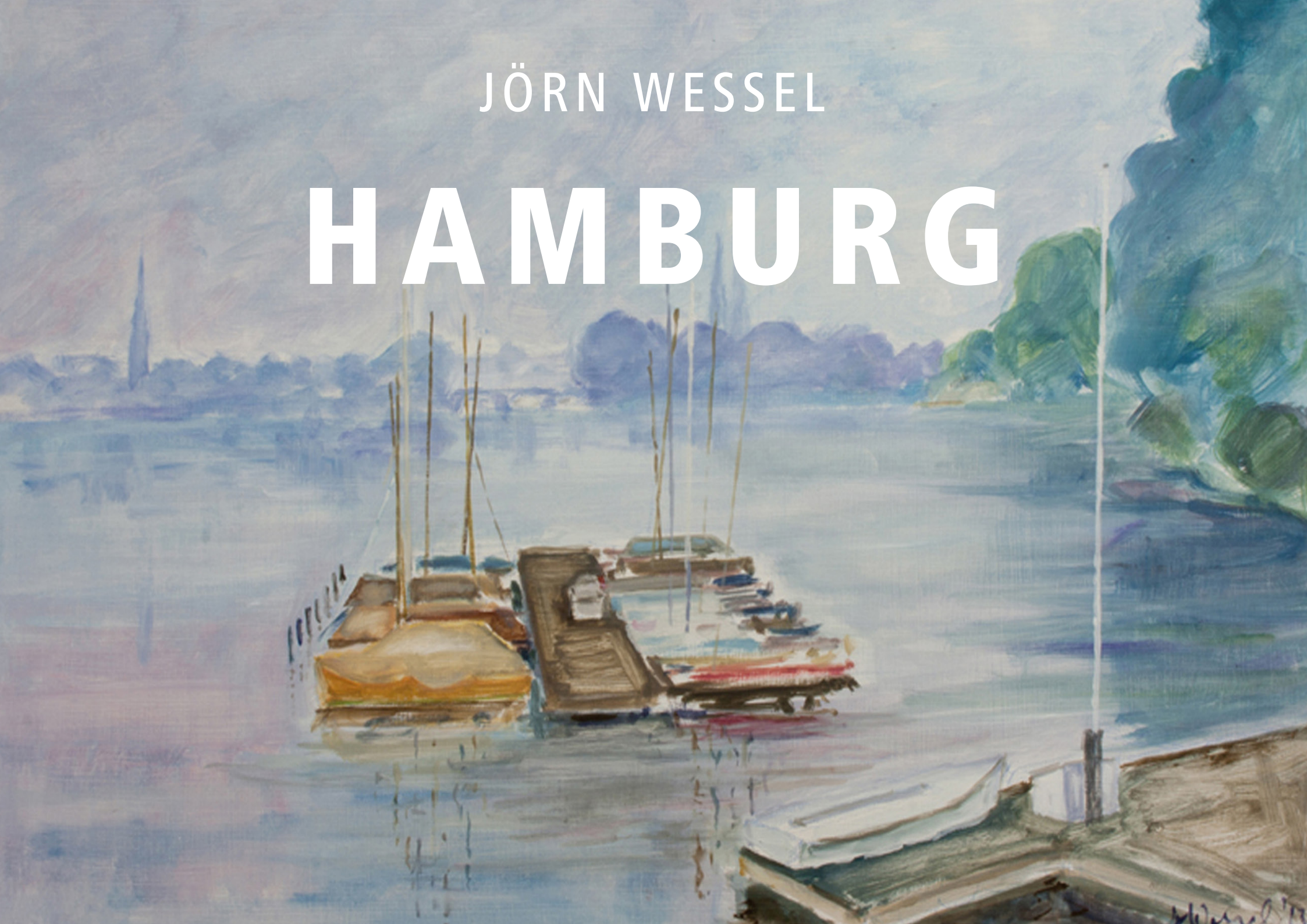


JÖRN WESSEL

HAMBURG



JÖRN WESSEL
HAMBURG

HAMBURG

FOUR SEASONS IN
ÖVELGÖNNE AND BLANKENESE

WINTERTIME

GRAPHIC WORKS

SKETCHBOOK

In my paintings of Hamburg I focused not on cityscapes and architecture, but rather on observing the city from different viewpoints throughout the seasons, in order to capture the shifting atmosphere -mood- of the city.

The Alster -a manmade lake right in the center of the city- has been, and still is, my favorite subject, which I have depicted in a wide variety of techniques. The observation of a group of trees, *Baumgruppe durch die Jahreszeiten*, throughout the seasons (pastel) as well as the reflection of Weinlaub on water, *Spiegelung* (oil on canvas) are good examples. Similarly, the self-contained, picturesque neighborhoods at the Elbufer -Övelgönne and Blankenese- inspired me to accompany them throughout the year as well.

Additionally, winter paintings, watercolors, and drawings enrich these artistic impressions of Hamburg, and help capture the feel and nature of the city.



HAMBURG



Early morning at the Alster / Oil on hardboard / 50 by 70cm / 2013



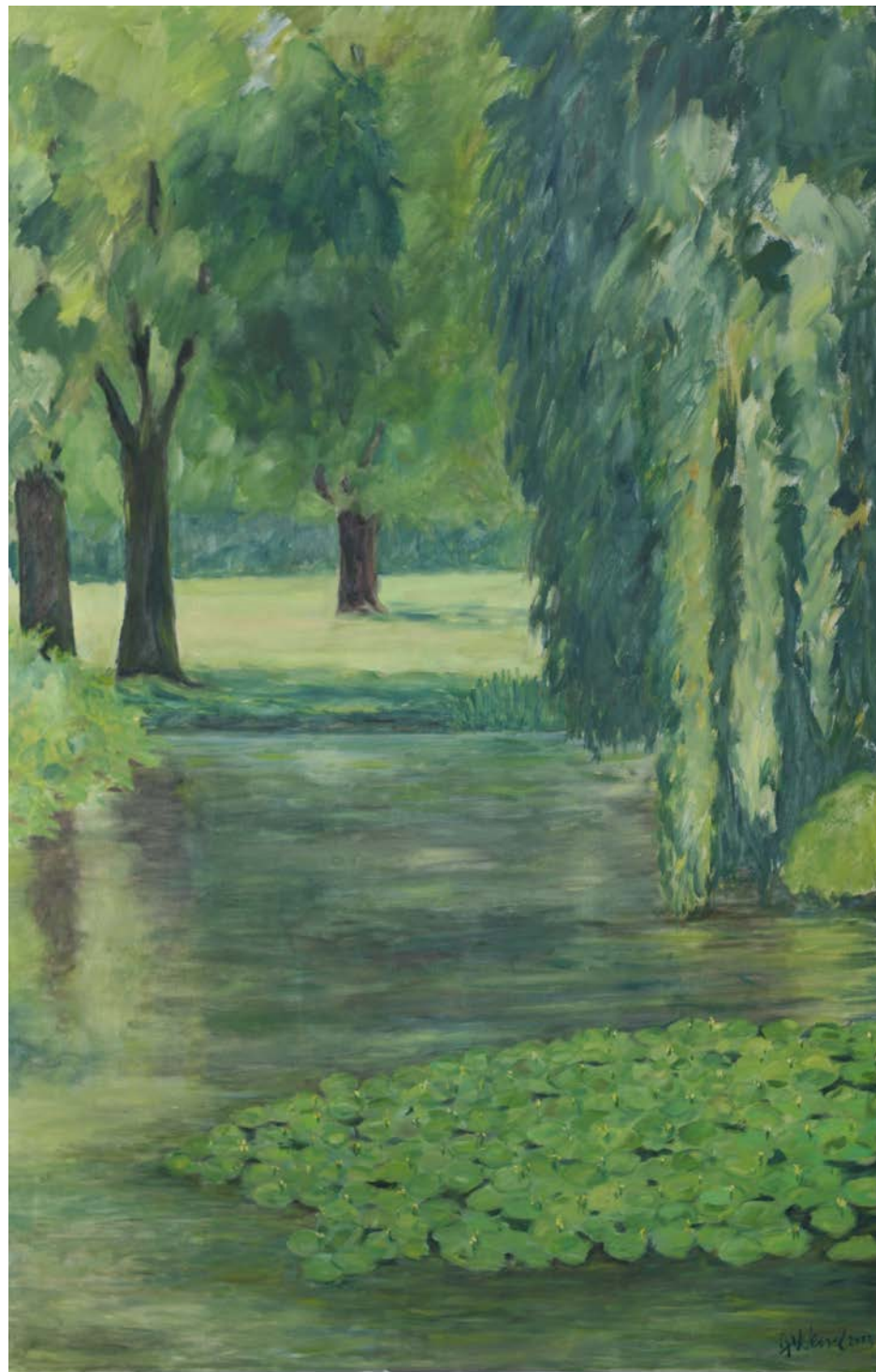
View of Hamburg across the Alster / Oil on hardboard / 50 by 70cm / 2013



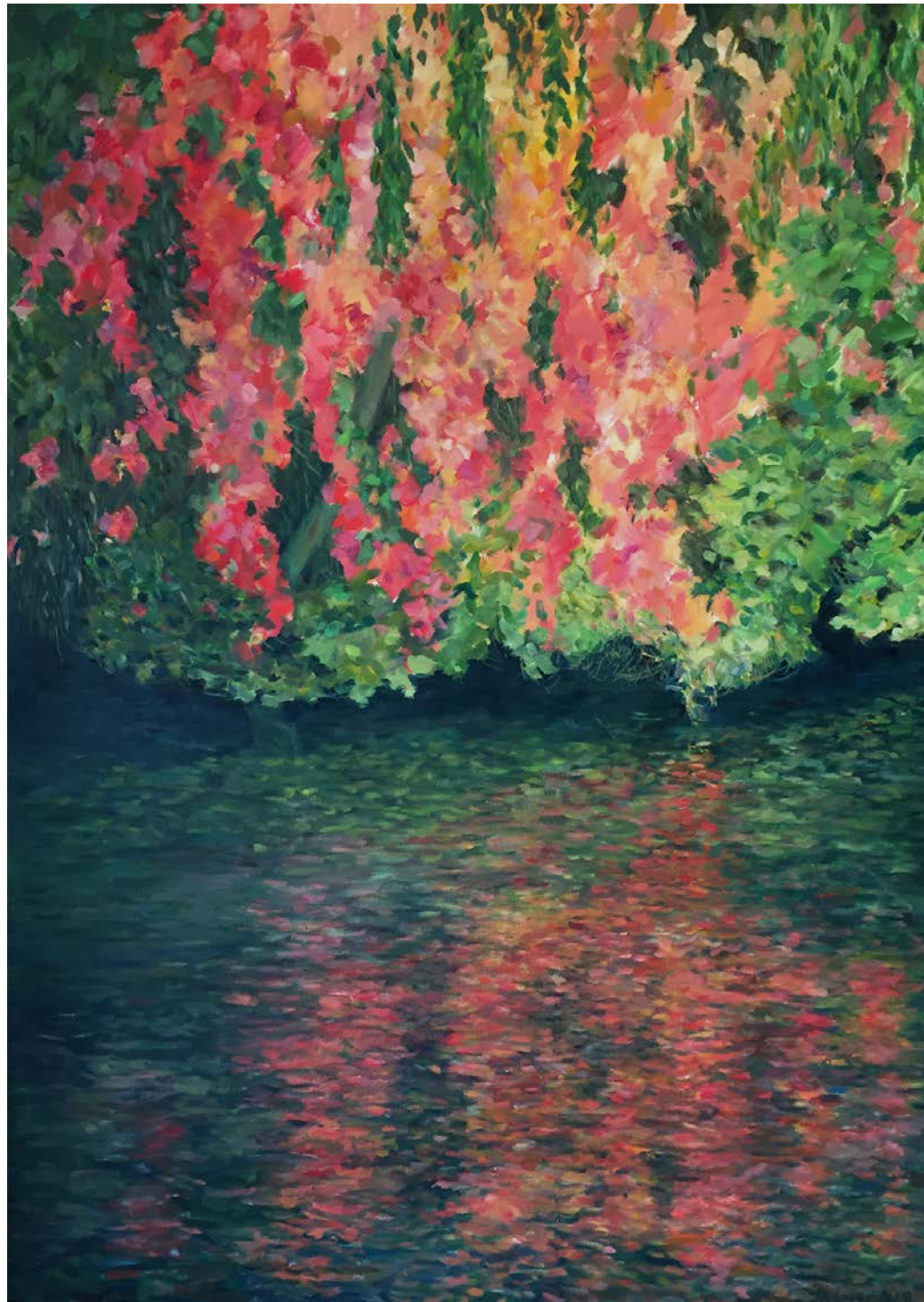
View of Jungfernstieg in the evening / Oil on hardboard / 50 by 70cm / 20133



Lily pond in the park I / 60 by 40cm / Oil on Canvas / 2012



Lily pond in the park II / 90 by 120cm
Oil on Canvas / 2013



Reflection / 90 by 120cm
Oil on Canvas / 2010



View of Hamburg across frozen Alster / Oil on Canvas / 24 by 30cm / 2010



Morning at the frozen Alster / Oil on hardboard / 40 by 60cm / 2013



Fish market /24 by 30 cm / Oil on Canvas / 2002



Shipyards at the port of Hamburg / Oil on hardboard / 21 by 28cm / 2010



View of Hamburg from the water / 30 by 40cm / Oil on laminated Cardboard / 2010



FOUR SEASONS IN
ÖVELGÖNNE AND BLANKENESE



Spring day in Övelgönne / Oil on canvas / 50 by 60cm / 2006



Easter bonfires on the beach of Övelgönne / Oil on canvas ss/ 40 by 50cm / 2006



Summer day in Övelgönne I / Oil on canvas / 40 by 50cm / 2005



Summer day in Övelgönne II / Watercolor / 30 by 40cm / 2006



Summer day in Övelgönne III / Oil on canvas / 40 by 50cm / 2006



Övelgönne - at the beach I / Oil on hardboard /30 by40 / 2008



Övelgönne - at the beach II / Oil on laminated chipboard / 20 by 30 / 2006



Övelgönne - at the beach III / Watercolor / 30 by 40cm / 2006



View from the *Augustinum* to the Museums Harbor and Övelgönne / Oil on canvas / 90 by 130 cm / 2006



Beach walls in Övelgönne / Oil on canvas / 30 by 40cm / 2006



Autumn day on the beach, Övelgönne / Oil on canvas / 30 by 40cm / 2006



View of the *Süllberg*, Blankenese / Oil on canvas / 50 by 70cm / 2006



Twilight / Oil on canvas / 50 by 60cm / 2006



Winter day in Övelgönne I / Oil on hardboard / 21 by 28cm / 2006



Winter day in Övelgönne II / 21 by 28cm / Oil on hardboard / 2006



Winter day in Övelgönne III / 21 by 28cm / Oil on hardboard / 2006



Winter day in Övelgönne IV / 21 by 28cm / Oil on hardboard / 2006



Winter day in Blankenese / 40 by 50cm / Oil on canvas / 2006



Winter day at the beach, Blankenese / 30 by 40cm / Oil on canvas / 2005



Winter at *Jenisch Park* / 21 by 28cm / Oil on hardboard / 2009



WINTERTIME



Path to the Kollau stream in winter / 40 by 50cm / Oil on hardboard / 2005



Small wooden bridge in winter / oil on harboard / 21 by 28cm / 2005



Tree trunks with snow / oil on harboard / 16 by 22cm / 2005



GRAPHIC WORKS



A group of trees changing with the seasons

I created my first drawing in the winter of 2013 - after unexpectedly heavy snowfall in March. Fascinated by the filigree, sparse structure of a group of trees on a trail at the Außenalster -an artificially created lake, being part of the Alster, one of the two main rivers flowing through Hamburg- I decided to spontaneously capture my impression. After finishing the drawing I was curious to discover how that group of trees would transform throughout the seasons.



Winterday / Black and white chalk on grey paper / 25 by 35cm / 2013



Sundown / Pastell / 25 by 35cm / 2013



Early Spring / Pastell / 25 by 35cm / 2013



Spring / Pastel / 25 by 35cm / 2013



Summer / Pastell / 25 by 35cm / 2013



Autumn / Pastell / 25 by 35cm / 2013



Winter evening / Pastell / 25 by 35cm / 2013



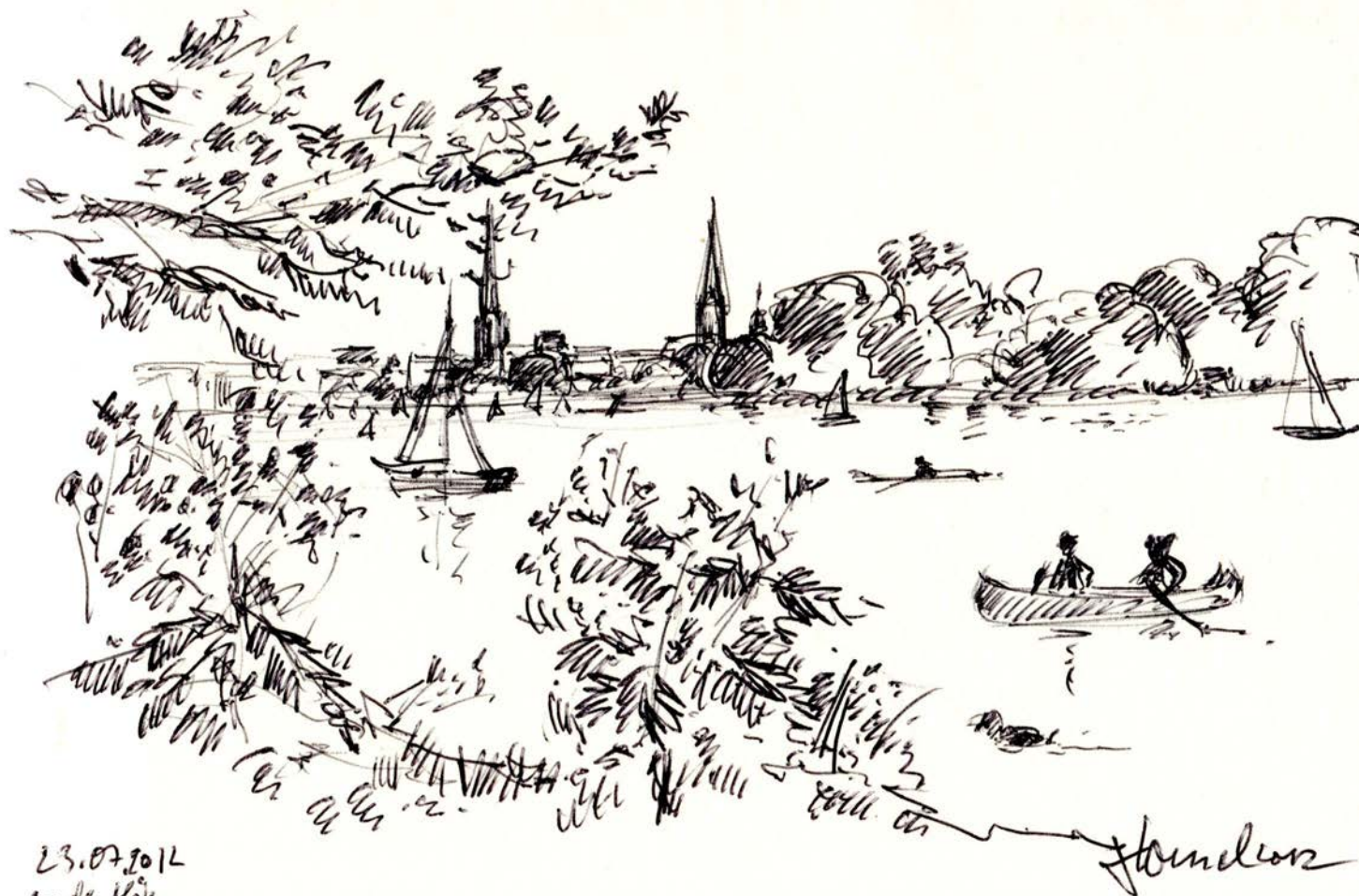
Pond with water lilies / Pastell / 33 by 44cm / 2013



Small home in the garden / Colored pencil / 21 by 30 cm / 2009



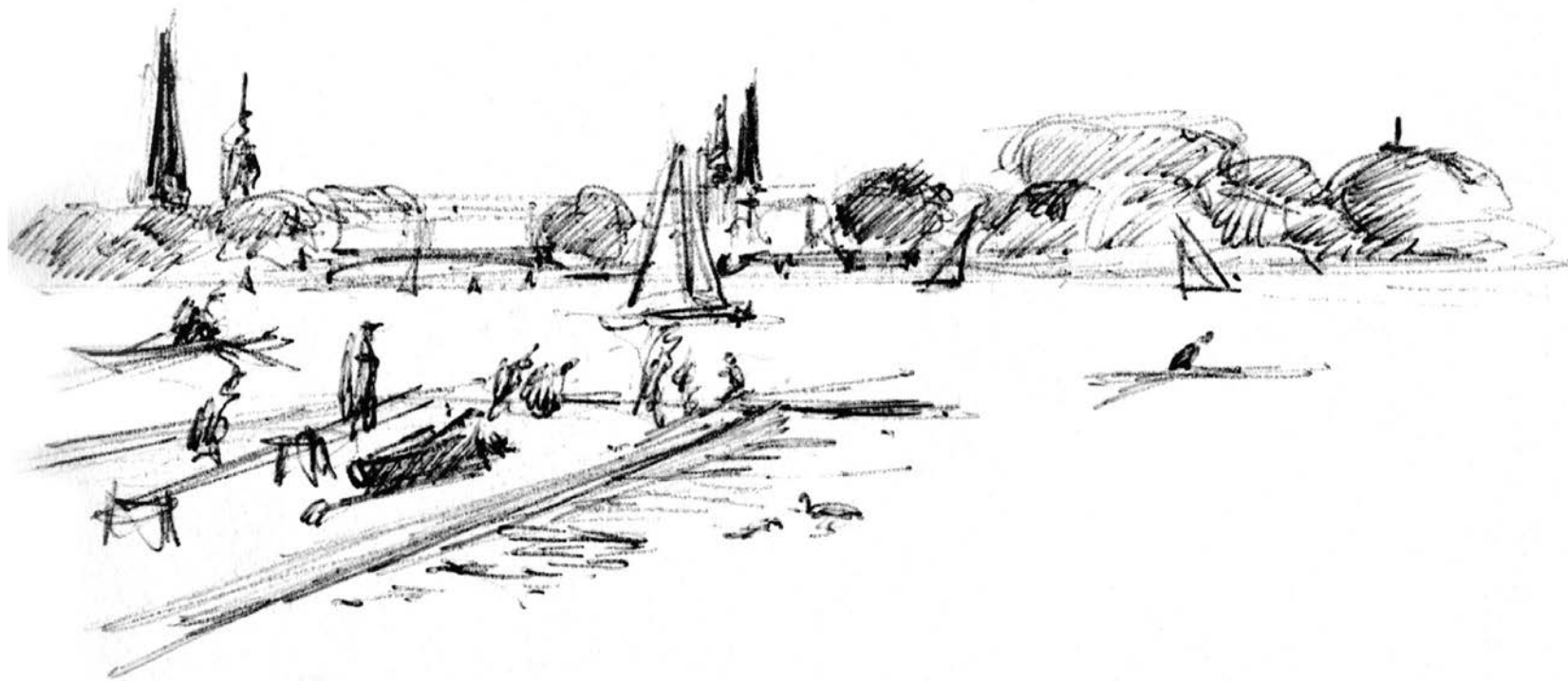
SKETCHBOOK



23.07.2012
An der Klise



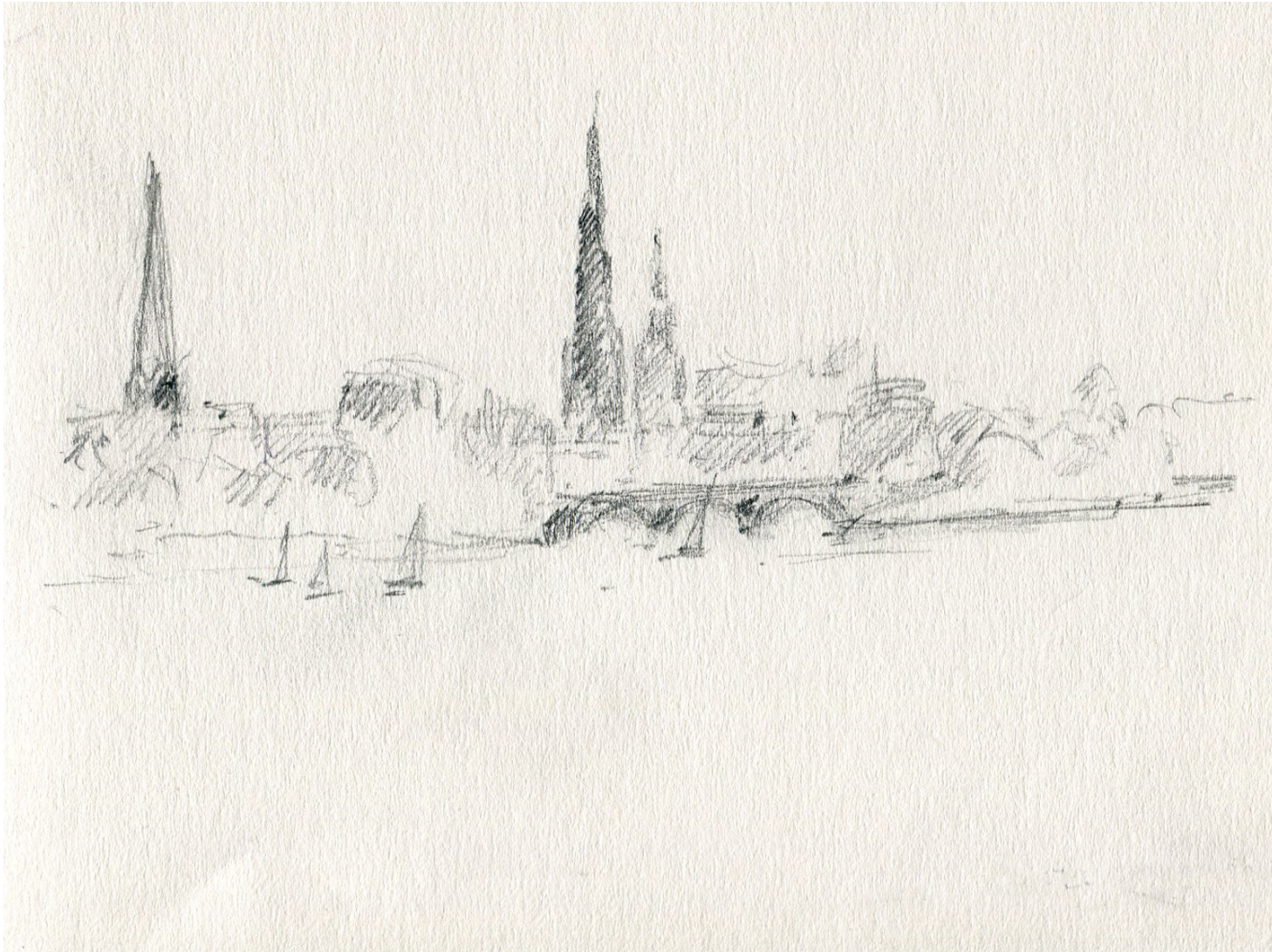
Alster / Ballpoint pen / 10 by 15 cm / 2009



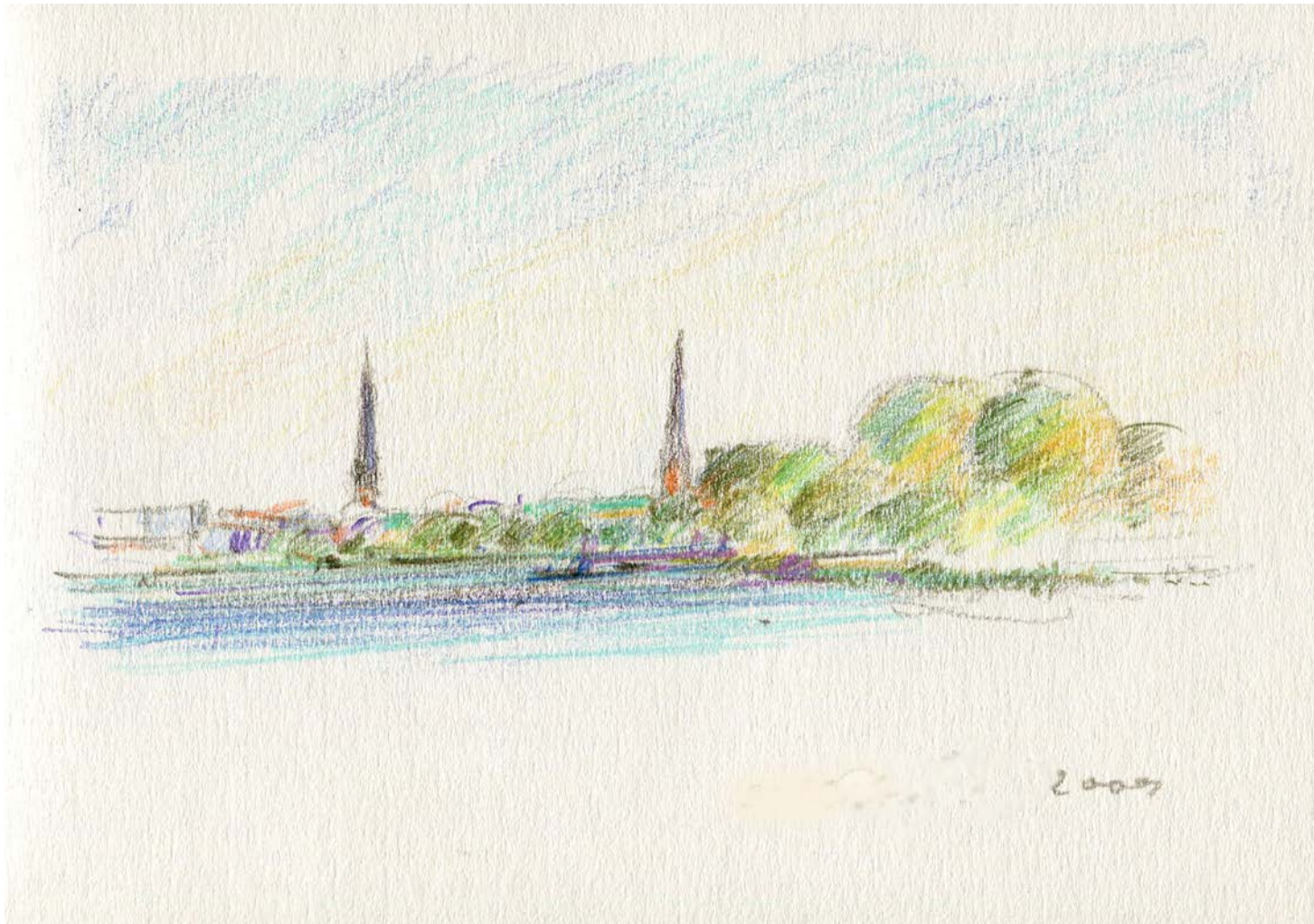
Jonel 05
10.10.05



Alster / Pencil / 10 by15cm / 2013



Alster / pencil / 10 by 15cm / 2009

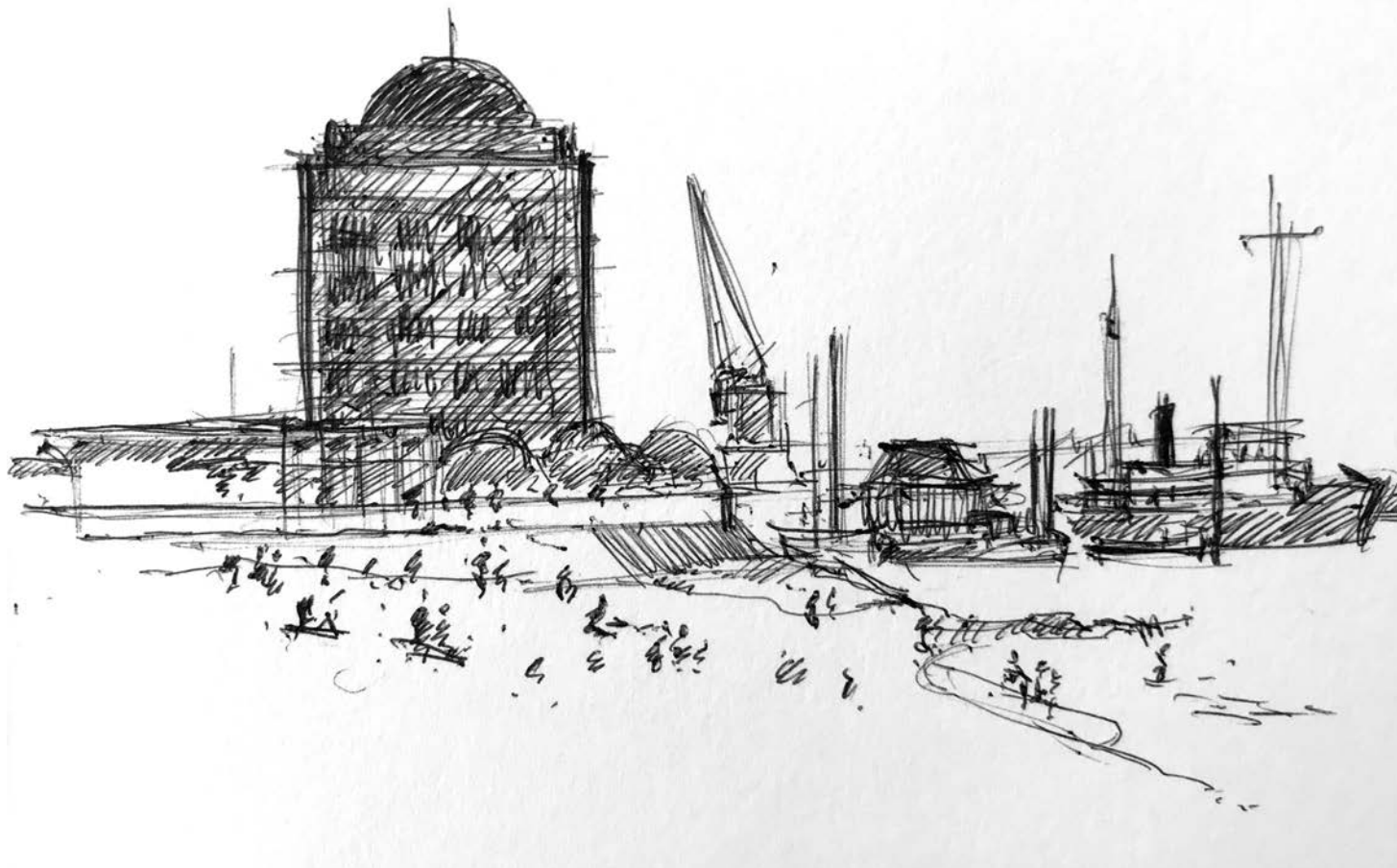


Alster / Colored pencil / 10 by 15cm / 2012

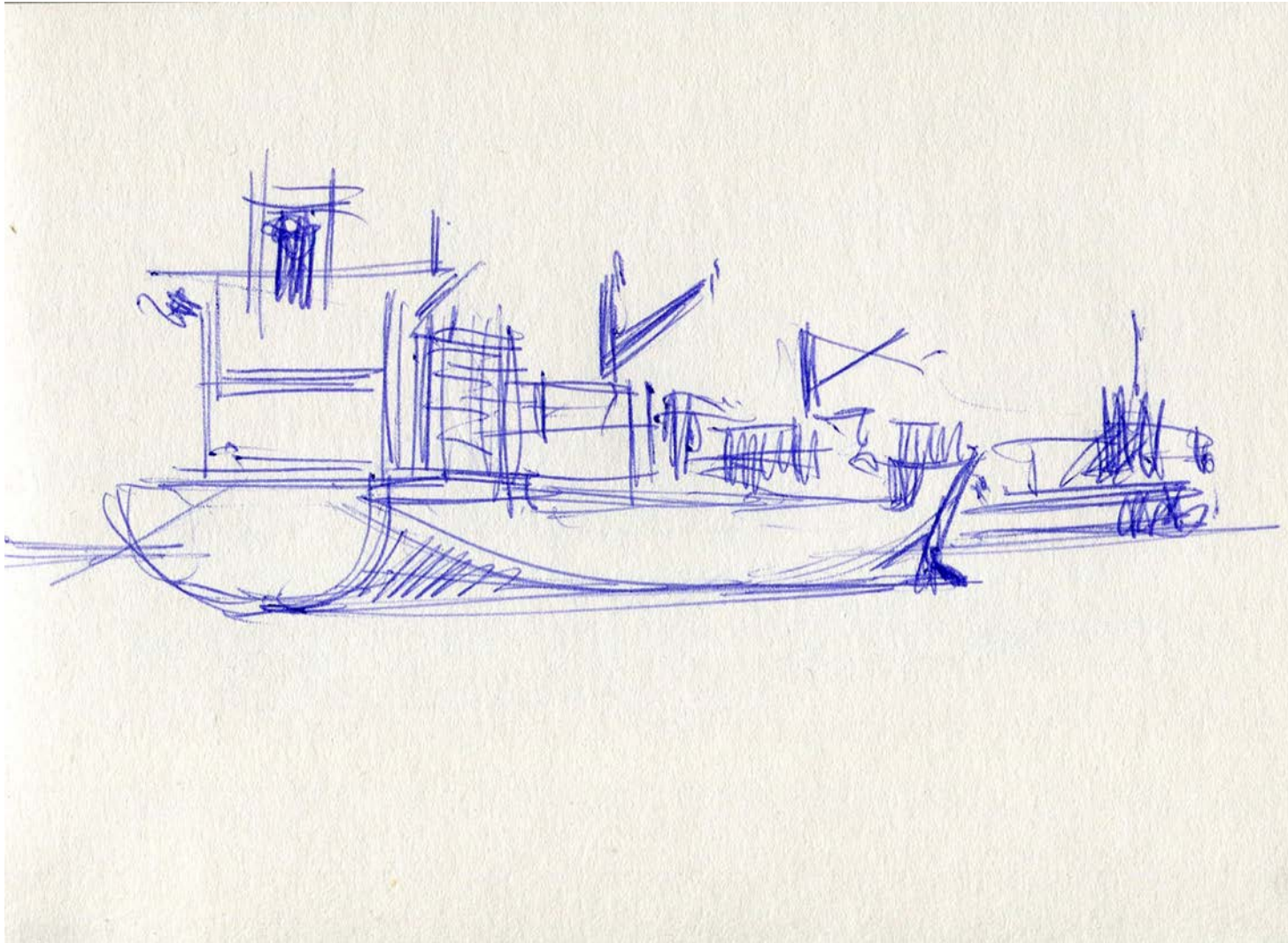




Alster / Watercolor / 10 by 15 cm / 2012



Augustinum / Ballpoint pen / 10 by 15cm / 2012



Cargo ship / Ballpoint pen / 10 by 15cm / 2012



Backyard with workshops / Fineliner and watercolor / 10 by 15cm / 2012



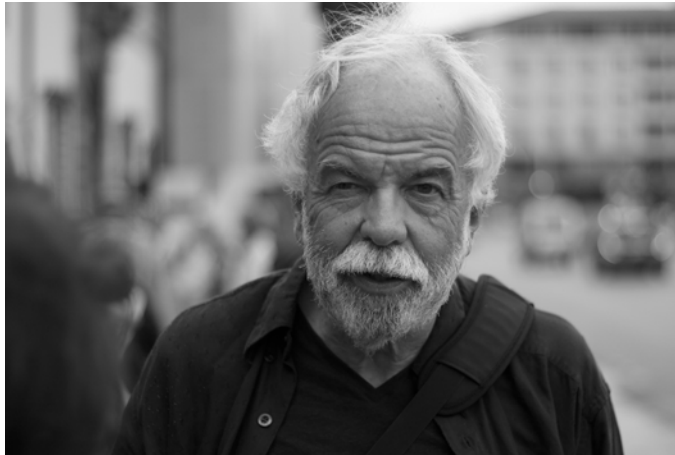
Small street / Fineliner and watercolor / 10 by15cm / 2012



Front yard / Fineliner and watercolor / 10 by 15cm / 2012



Coffee shop / Pencil / 10 by 15cm / 2005



JÖRN WESSEL

Jörn Wessel is a painter, illustrator and studied designer. After his path took him to Sweden, Austria, and Italy, he now lives and works in his hometown of Hamburg, Germany.

From his early childhood he is surrounded by color. Erich Wessel, his father, was a well known painter in the local art scene. Like many children he drew and sketched a lot. When he turned seven his father gave him a small oil color box, a palette, and brushes. With these, Jörn painted his first oil work in his Fathers studio: *Still life with orange, apple, and nuts*.

This was the moment his father taught him the importance of observing his subject: "Look very closely, and you will see what you have to do." An incentive that has stayed with him ever since. Additionally, his fathers vast knowledge about art history, and in particular about the evolution of techniques, helps him to hone his artistic sensibilities early on.

This way he was shown a methods and possibilities, which lay the foundation for discovering, advancing, and evolving his own artistic expression.

Jörn Wessels works contain scenes from Hamburg, London, New York, Austria, Italy, France, and Denmark, and paintings by him are privately and publicly owned in Austria, Italy, and Germany.



JÖRN WESSEL
contact@joernwessel.com

joernwessel.com

© Jörn Wessel. Unauthorized use and/or duplication of this material without express and written permission from the author and/or owner is strictly prohibited. Excerpts and links may be used, provided that full and clear credit is given to Jörn Wessel with appropriate and specific direction to the original content.