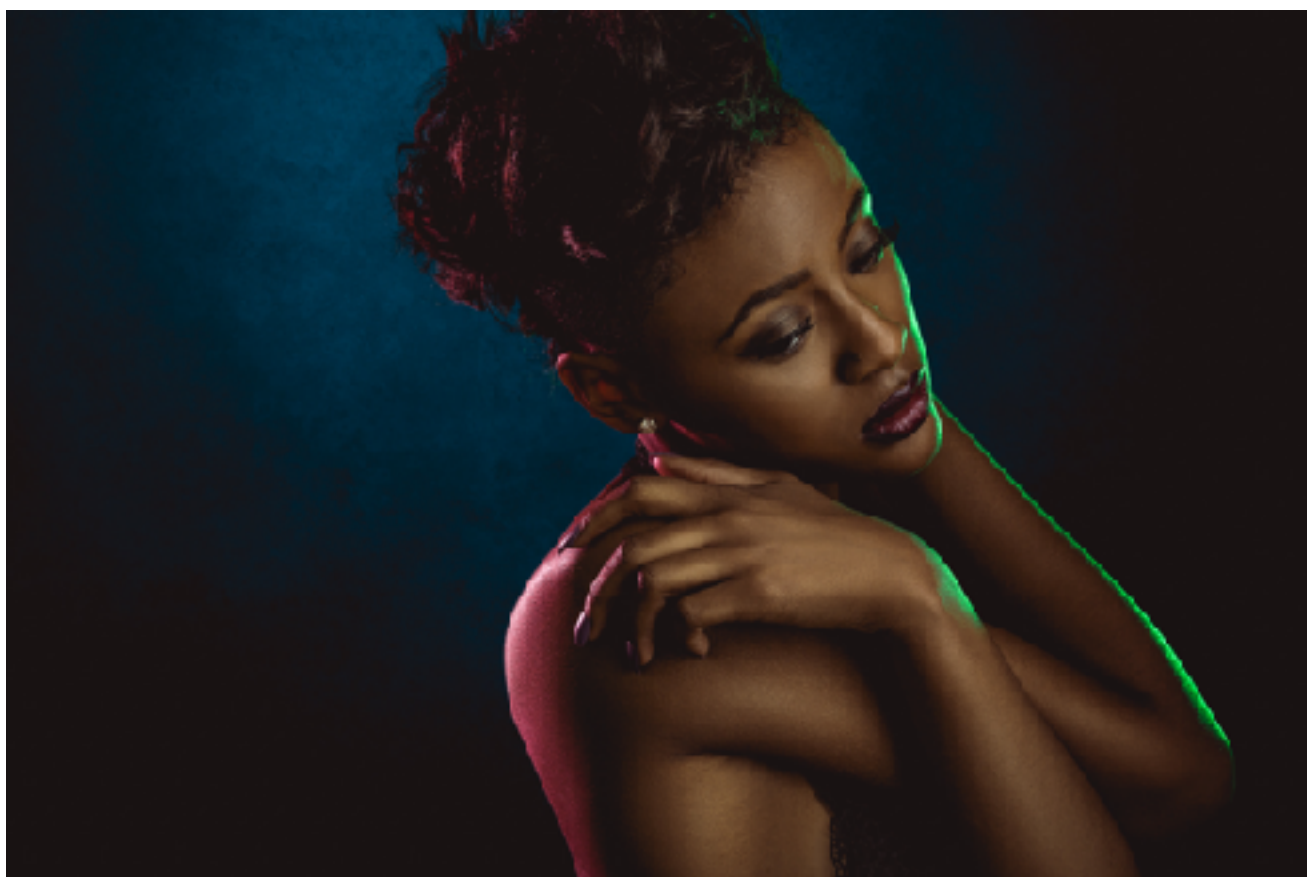
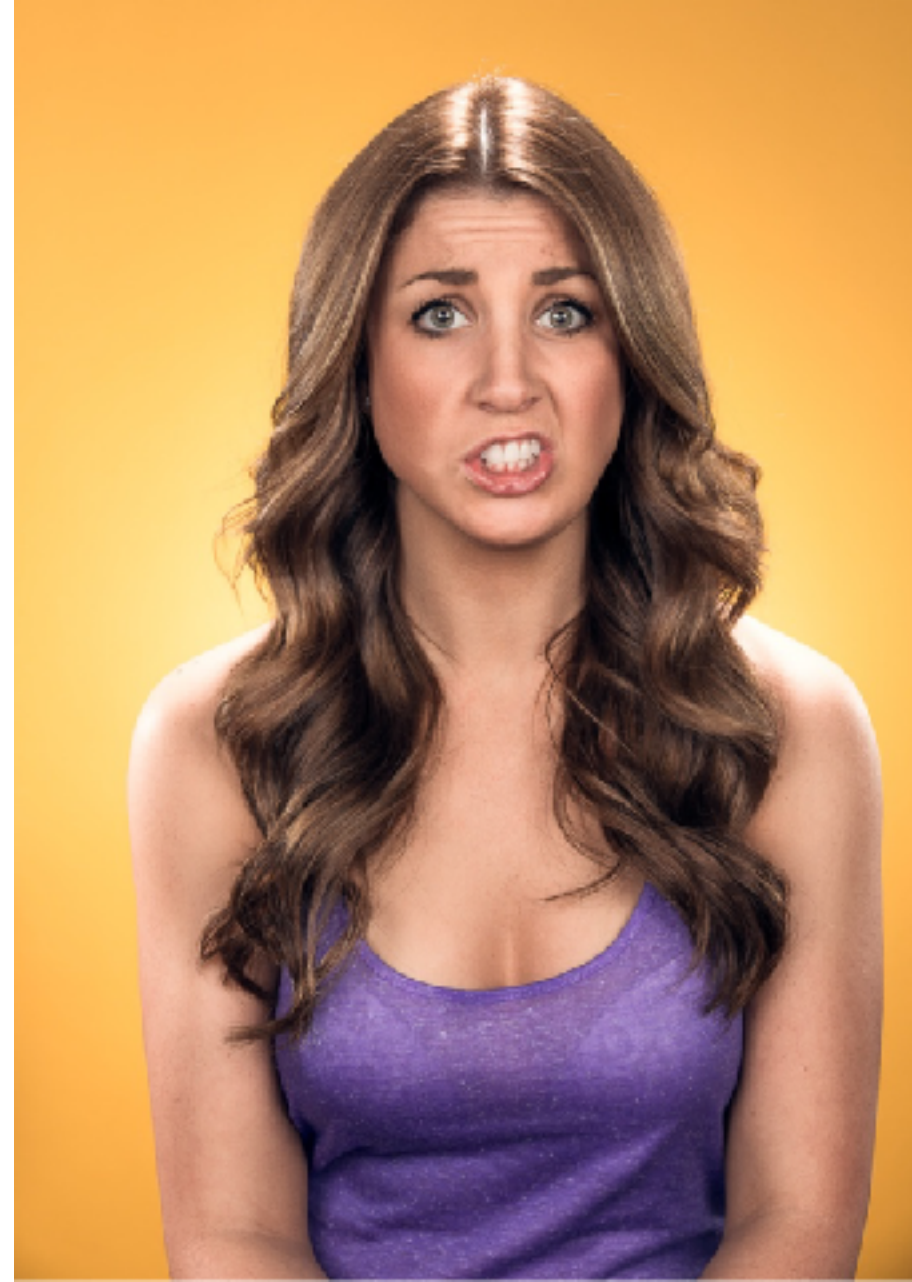




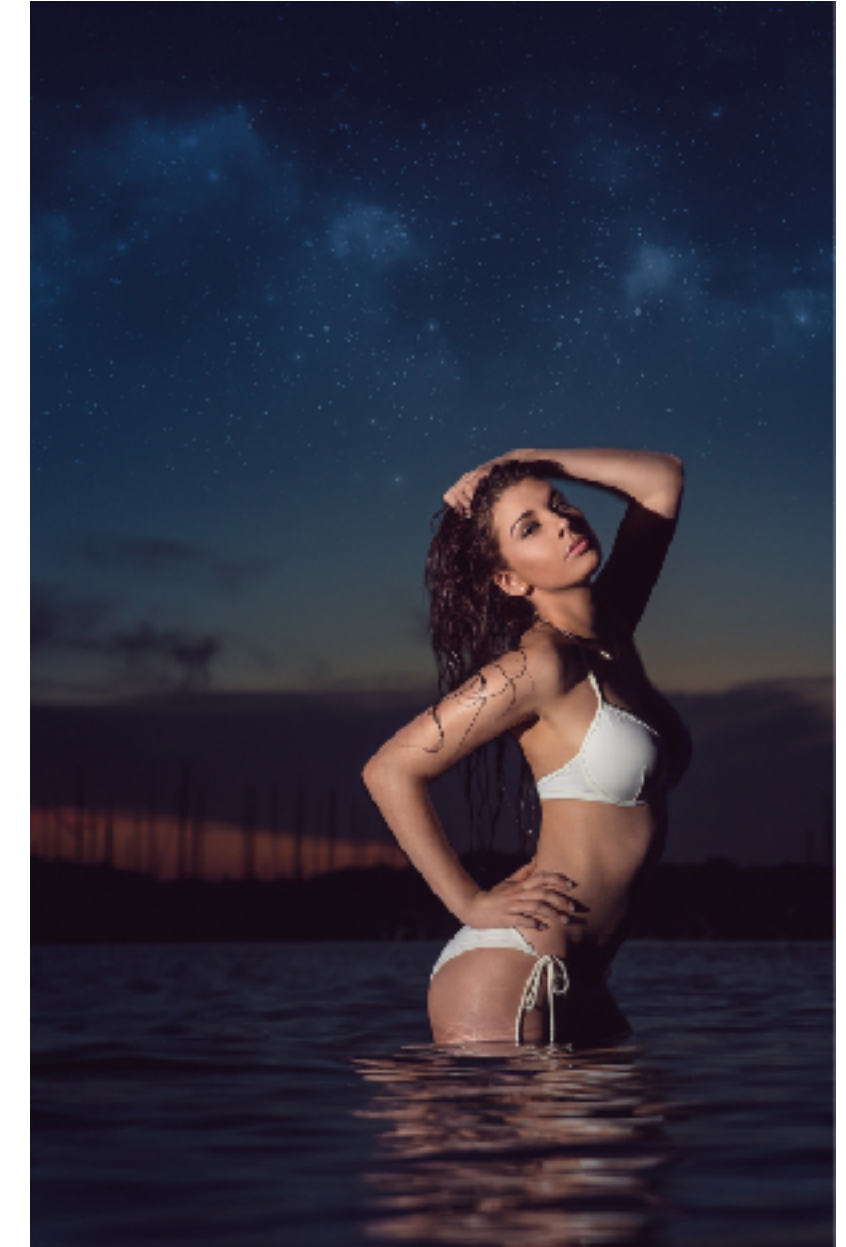
LIGHTING BASICS

PORTRAIT LIGHTING EXAMPLES

IN STUDIO



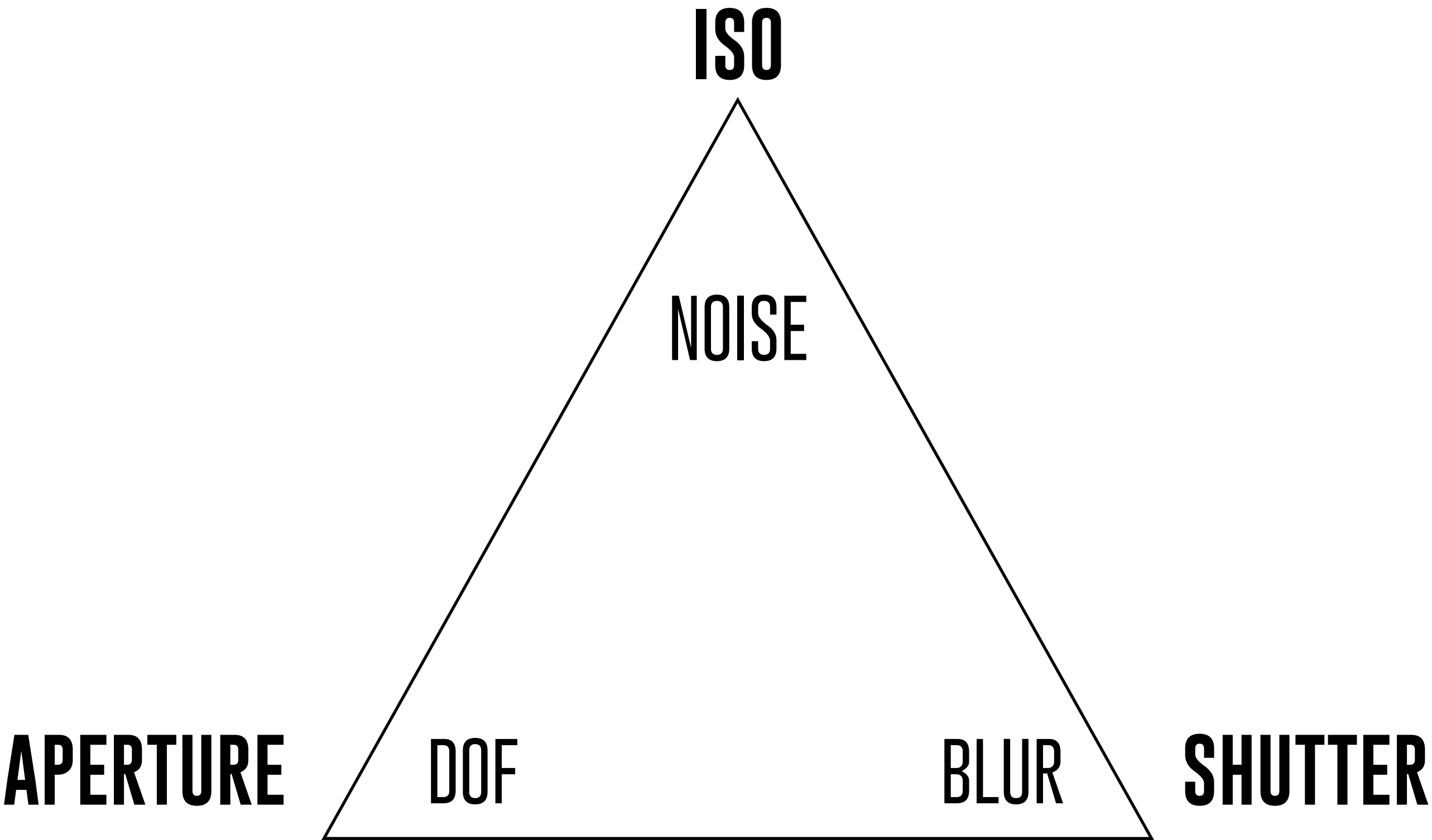
ON LOCATION



BALANCING ACT

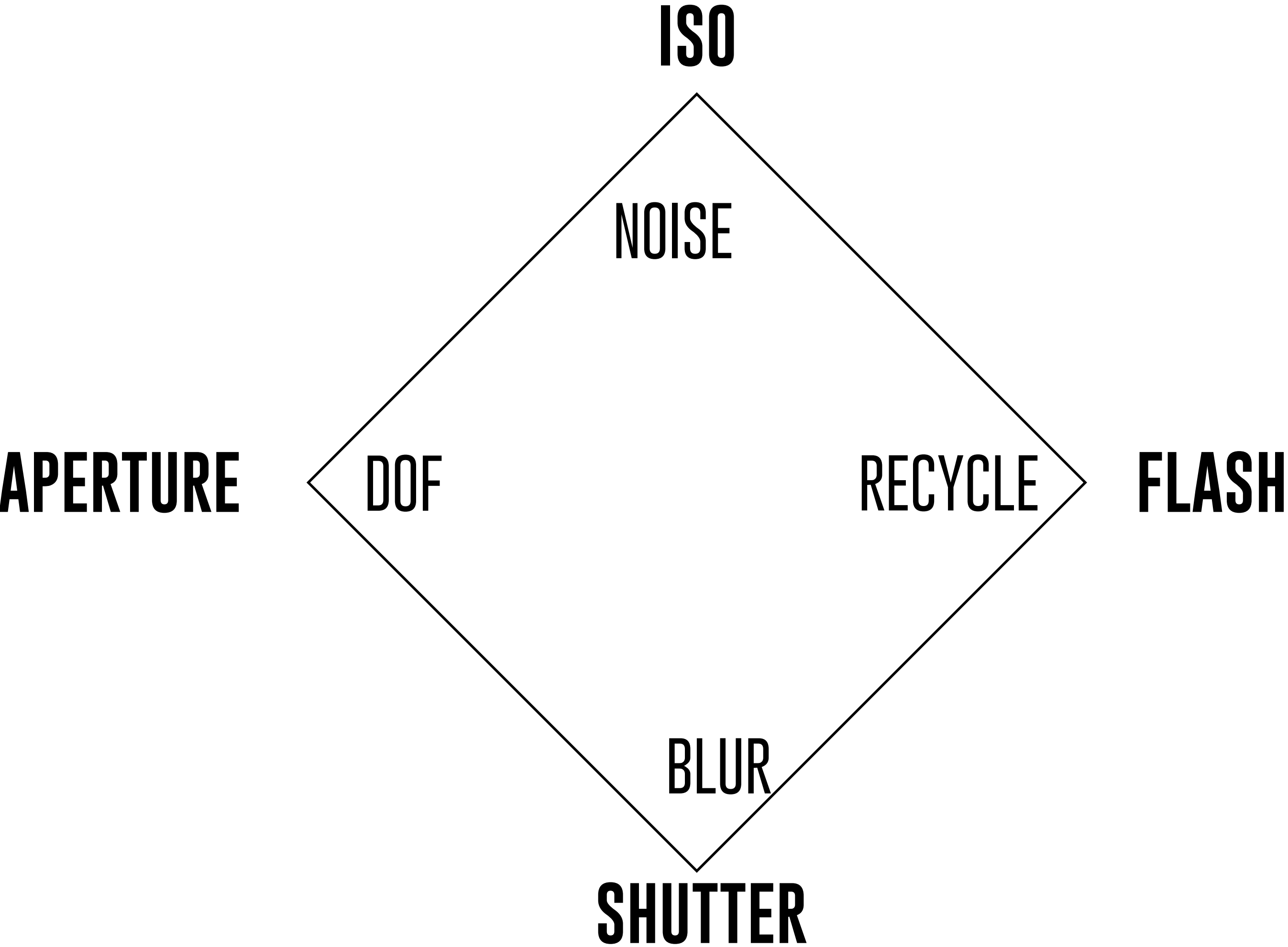
EXPOSURE TRIANGLE

AVAILABLE LIGHT



EXPOSURE DIAMOND

AVAILABLE & FLASH LIGHT



EXAMPLES OF 'STOPS' OF LIGHT

ISO 100→200 (+ 1 STOP)

APERTURE F5.6→F4.0 (+ 1 STOP)

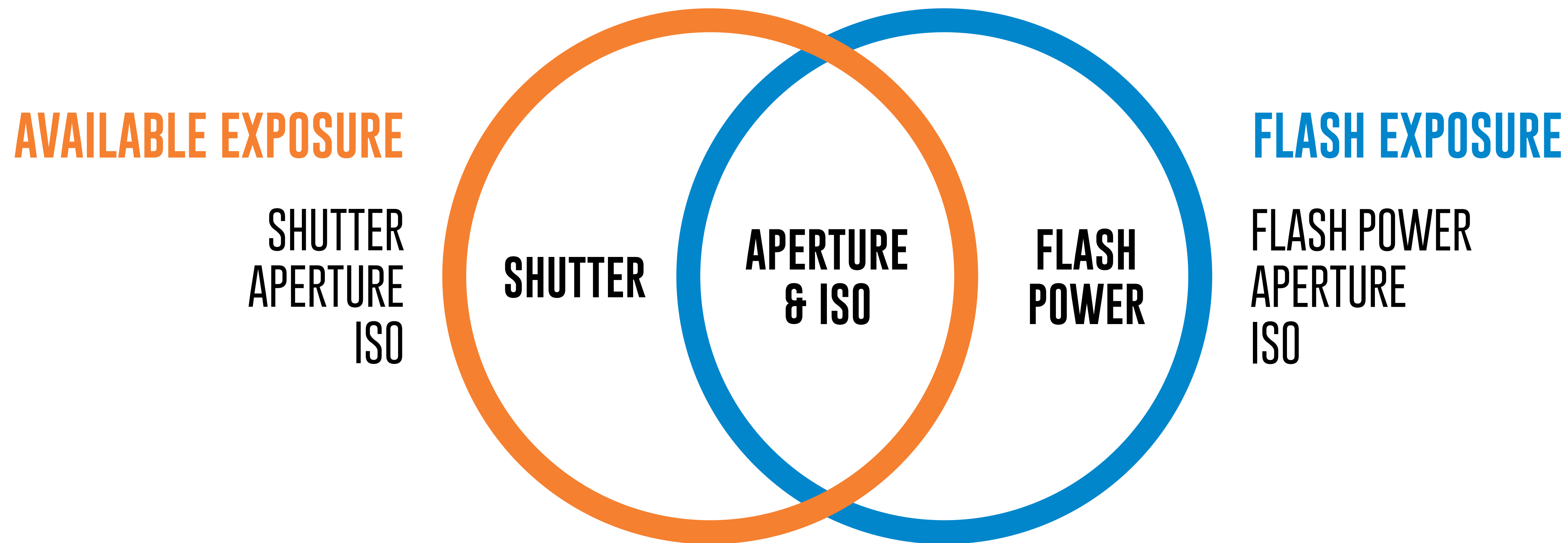
SHUTTER 1/500→1/250 (+ 1 STOP)

FLASH 1/2→1/1 (+ 1 STOP)

+ 1 STOP = DOUBLE AMOUNT OF LIGHT

- 1 STOP = HALF AMOUNT OF LIGHT

SETTINGS THAT CONTROL AVAILABLE LIGHT & FLASH LIGHT



1 LIGHT

FLASH



SPEED LIGHT

- PORTABLE
- LIGHT WEIGHT
- BATTERY POWERED
- MANUAL OR TTL
- HIGH SPEED SYNC
- LOW POWERED
- CAMERA MOUNT



MONO LIGHT

- HEAVY
- AC POWERED*
- MANUAL
- HIGH POWERED
- LIGHT STAND MOUNT



BATTERY POWERED STROBE

- HEAVY
- BATTERY POWERED
- MANUAL OR TTL
- HIGH POWERED
- HIGH SPEED SYNC
- LIGHT STAND MOUNT

LED



LED PANEL

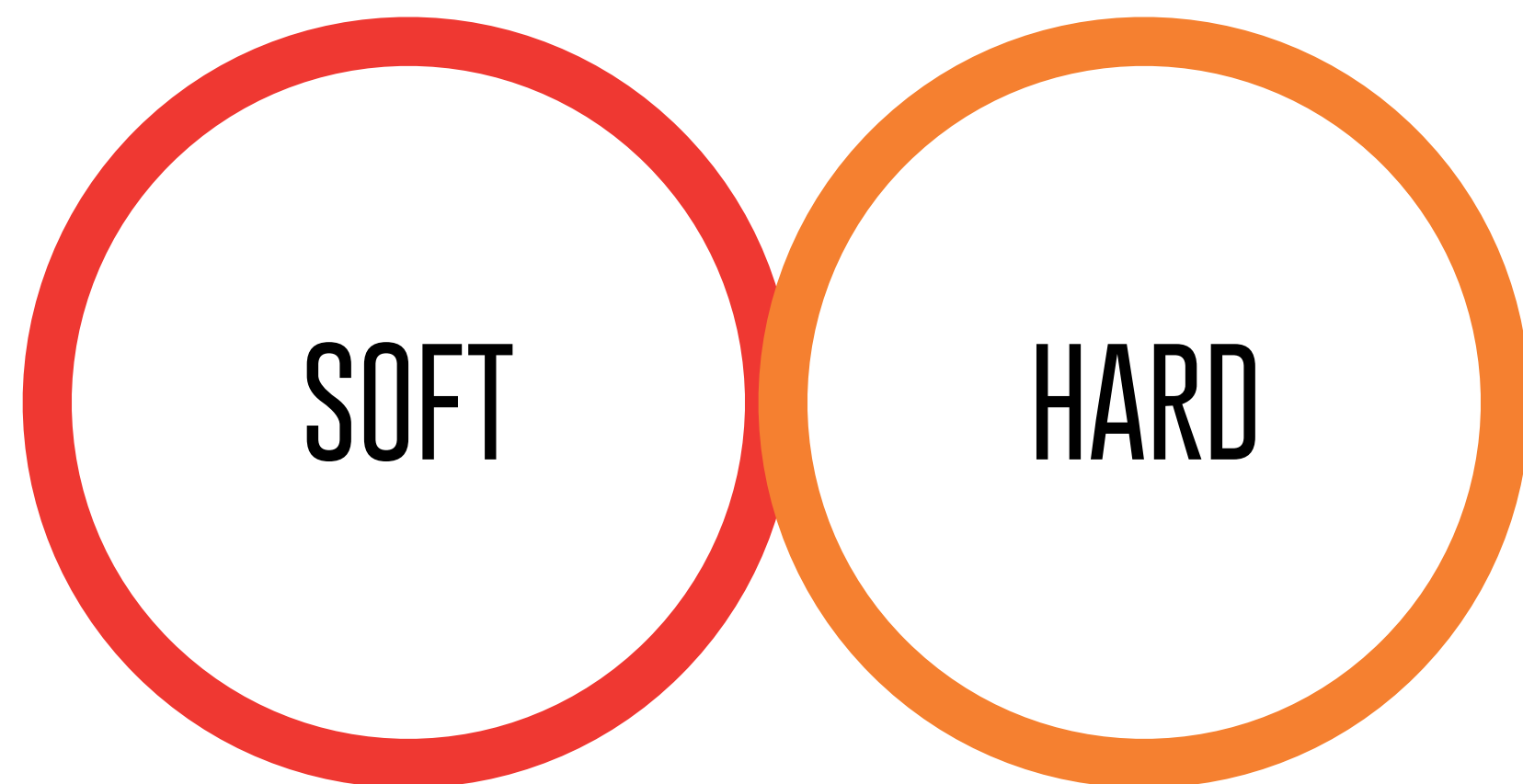
- LIGHT
- COOL
- BI-COLOR
- AC/DC POWERED
- MANUAL
- LOW/MED POWERED
- LIGHT STAND MOUNT



LED 'STROBE'

- HEAVY
- COOL-ISH
- BI-COLOR
- AC/DC POWERED
- MANUAL POWER
- MED/HIGH POWERED
- LIGHT STAND MOUNT

LIGHT QUALITIES



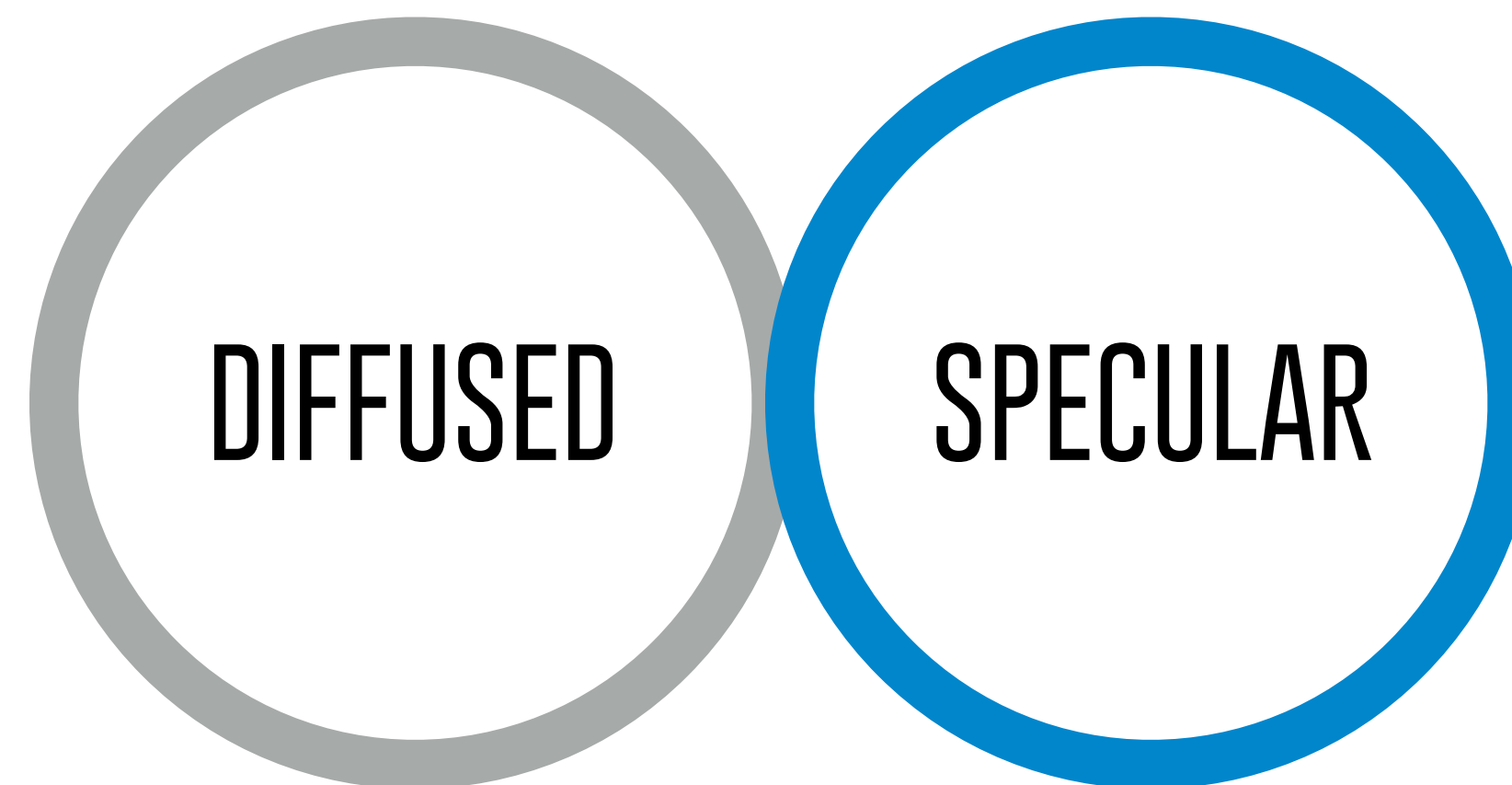
LARGE ↔ SMALL

DEFINITION

SOFT LIGHT = GRADUAL “FALLOFF” OF LIGHT TO SHADOW
HARD LIGHT = QUICK “FALLOFF” OF LIGHT TO SHADOW

CREATED BY

SIZE IN RELATION TO THE SUBJECT



MATTE ↔ REFLECTIVE

DEFINITION

SPECULAR = BRIGHTER HIGHLIGHTS AND “SHEEN”
DIFFUSED = SUBTLE AND GRADUAL HIGHLIGHTS

CREATED BY

SPECULAR: FROM SHINY/SILVER MODIFIERS
DIFFUSED: FROM MATTE/WHITE MODIFIERS

LIGHT MODIFIERS

SOFT



HARD



PORTRAIT LIGHTING PATTERNS

**BUTTERFLY/
PARAMOUNT**

LOOP

**REMBRANDT/
CLOSED LOOP**

SPLIT



LESS DRAMATIC > MORE DRAMATIC

BROAD



MORE OF THE FACE IS LIT.
SHADOWS AWAY FROM CAMERA

MORE DRAMATIC →

← LESS DRAMATIC

SHORT



LESS OF THE FACE IS LIT.
SHADOWS TOWARD THE CAMERA

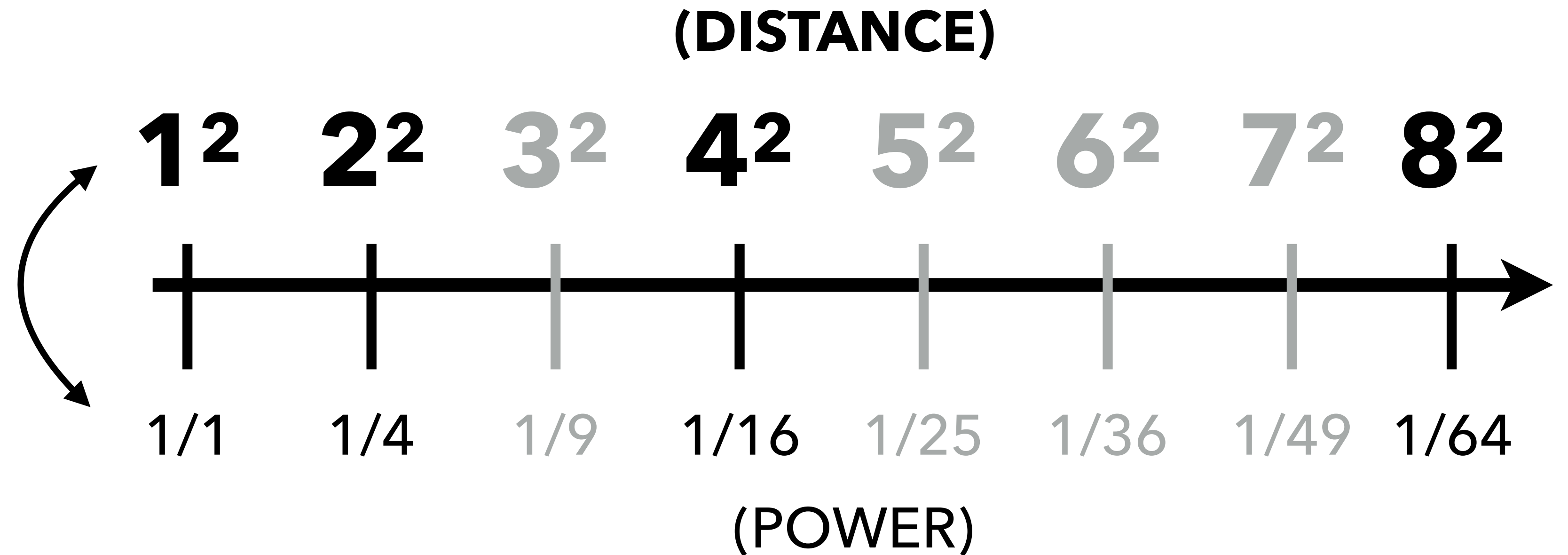
COLOR TEMP

FLASH TEMP



INVERSE SQUARE LAW

WHEN YOU DOUBLE THE DISTANCE BETWEEN YOUR SUBJECT
AND YOUR LIGHT YOU LOSE 2 STOPS



FALLOFF

THE TRANSITION OF LIGHT TO SHADOW

MOUNTING & TRIGGERING FLASH



HOT SHOE

COLD SHOE



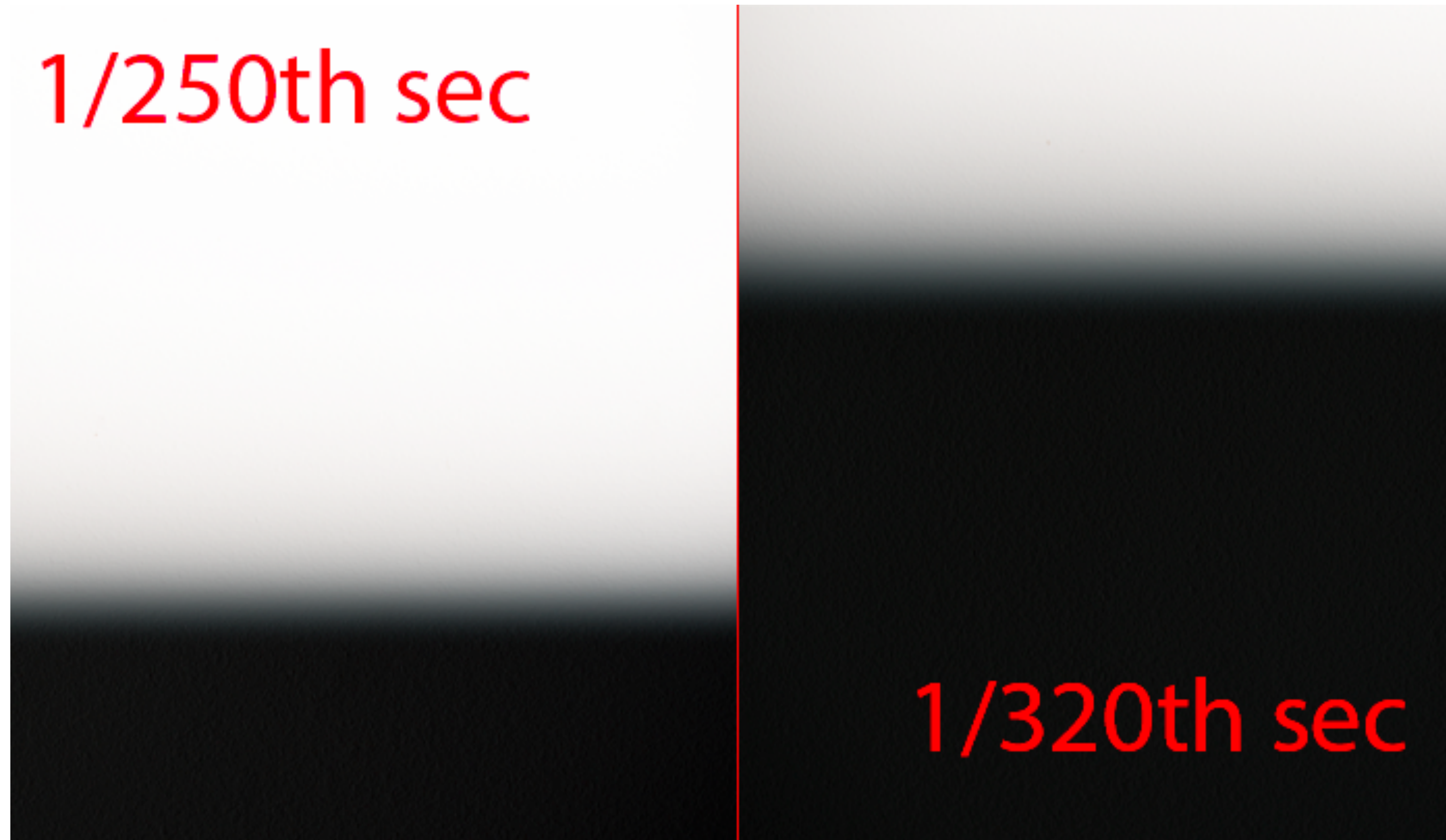
WIRELESS



SYNC SPEED

FLASH ONLY

SHUTTER SYNC SPEED IS THE FASTEST YOUR CAMERA WILL ALLOW YOUR
FLASH TO BE VISIBLE.



WHEN YOU GO BEYOND YOUR CAMERA'S SYNC SPEED,
YOU INTRODUCE 'BLACK BARS'

HIGH SPEED SYNC

FLASH ONLY

HIGH SPEED SYNC

PROS

- **USE SHUTTER FASTER THAN 1/200**
- **USE WIDER APERTURE (BLURRY BACKGROUND)**
- **AUTOMATICALLY TURNS ON (DEPENDING UPON SYSTEM)**

CONS

- **USES MORE POWER**
- **DRAINS BATTERIES FASTER**
- **EXPOSURE CAN VARY**

QUESTIONS?

DEMO

